

INTRODUCTION TO CRIMINAL JUSTICE

CRIJ 1301 Course Syllabus

"Justice cannot be for
one side alone, but must
be for both."

- Eleanor Roosevelt

This syllabus was created to provide you with an overview of the learning expectations for this course. You can find additional details about class assignments and course policies on Canvas.

This class is taught fully online. All interactions will take place through Canvas.

DR. JENNIFER KLEIN

My office is in the College of Arts & Sciences building, Office 135. You can reach me at jenniferklein@uttyler.edu or 903.566.7438.

I will hold drop-in student hours on Tuesdays from 9 a.m. to 12 p.m via Zoom. You can also schedule an appointment as needed. Please email appointment requests. See Canvas for log in details.

Course Description

This course provides a historical and philosophical overview of the American criminal justice system, including the nature, extent, and impact of crime; criminal law; and justice agencies and processes.

Syllabus Contents

- Page 2 Learning Objectives & Course Materials
- Page 3 Course Assignments
- Page 5 Grading Scale
- Page 6 Course Information
- Page 7 Course Schedule
- Page 8 Student Resources
- Page 9 UT Tyler Course Policies

Course Learning Objectives

By the completion of this course, you will be able to:

- **Critical Thinking:** Design policy recommendations based on crime trend data
- **Written Communication:** Design written arguments that use high-quality and credible sources to support your opinion
- **Quantitative Reasoning:** Construct tables, graphs, and other visuals to explain crime trends
- **Social Responsibility:** Evaluate criminal justice practices in the United States from the perspective of diverse international cultures
- Describe the history, philosophy, and structure of the American criminal justice system
- Explain the nature and extent of crime in America
- Compare American criminal justice practices with those of global partners
- Assess criminal justice policy developments and their applications
- Communicate empirical findings from criminal justice policy research to appropriate laypersons

Course Format

This course is taught entirely online. All course interactions will take place through Canvas, UT Tyler's learning management system. Video lectures are provided for each module, and there are a variety of other online technologies used to facilitate class assignments. In order to be successful, you will need to complete all online components of the course. To help you stay organized, a course schedule is provided for you in Canvas.

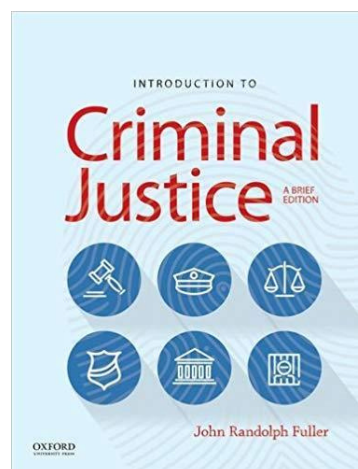
Required Textbook

Introduction to Criminal Justice

Oxford University Press

ISBN: 9780190298173 (Paperback)

ISBN: 9780190088828 (eBook)



John R. Fuller

Supplementary Materials

Your textbook includes a free student companion website (link below). The companion website includes chapter outlines, flashcards, and practice quizzes. Use of the student companion website is not required but is recommended for students seeking additional instruction or assistance with the course material.

www.oup.com/us/fuller



Course Assignments

Chapter Reading Quizzes

Readings are a vital part of this course because you will put the concepts into action during the module's laboratory activity. To promote retention and comprehension of the material, you will complete a short reading quiz each week. Quizzes will consist of multiple choice and true/false questions only. You may take each quiz up to three times. Only the highest score will count towards your final grade.

Plagiarism Certificate

While some forms of plagiarism are intentional, often plagiarism results from lack of understanding about what constitutes plagiarism and awareness of how to avoid plagiarized material. At the beginning of this course, you will complete an online certificate to help you recognize and avoid plagiarism. The course is self-paced and takes most students approximately two hours to complete. At the end of the course, you will complete a plagiarism test and receive a plagiarism certificate.

Final Exam

The course concludes with an online final exam worth 50 points. The final exam is an open-note, open-book exam that will test you over all of the lecture material and assigned readings from the course.

Lecture Video Quizzes

Since this is an online course, all lecture material will be provided in online lecture videos. Every week, you will complete a series of mini-lectures, each lasting between 5 and 10 minutes. You can post time-stamped text questions onto any lecture video for review and response by the course instructor within one business day.

All lecture videos include multiple choice and true/false quiz questions embedded directly into the video. You must complete the lecture video and submit the quiz in order to earn full points for the week. Lecture quizzes are automatically scored and entered into your Canvas gradebook, but you may retake the video again for a higher score. Only the most recent score will be applied to your final grade.

Course Structure





Online Activities

Your textbook is split into five parts. At the end of each part, you will complete an online activity that synthesizes the course material into a cohesive project, activity, or writing assignment. Online activities are worth 25 points each. Below are the learning objectives for each online activity. More detailed instructions, including detailed instructions and grading rubrics, is provided to you on the respective assignment page in Canvas.

Day in the Life of a Law Enforcement Officer

During this activity, you will:

- Summarize normal duties for law enforcement officers in the United States
- Appraise law enforcement duties to determine risk level
- Design a comic book illustration that depicts the life of a typical law enforcement officer

International Perspectives on the Death Penalty

During this activity, you will

- Research the history and application of death penalty sentences in a foreign country of your choice
- Summarize death penalty sentencing and historical practices in the country you chose
- Using the perspective of your researched country, critique capital punishment in the United States
- Support your written analysis with high-quality and credible sources from your research

Crime Trends Infographic

During this activity, you will:

- Interpret crime trend data from official data sources
- Construct tables, graphs, and other visual aids to explain crime trends
- Design an infographic that summarizes crime trend data for policymakers
- Design a policy recommendation based on crime trend data

Presentence Investigation Report

During this activity, you will

- Review a presentence investigation report (PSIR) of a hypothetical offender
- Compute a risk score for the offender using the Texas Risk Assessment System (TRAS) Instrument
- Justify your risk assessment using risk factors from the TRAS instrument and behaviors or characteristics identified in the PSIR.

Juvenile Justice Timeline

During this activity, you will

- Locate United States Supreme Court rulings and organize the decisions chronologically
- Interpret the rulings of the United States Supreme Court cases relating to juvenile justice
- Hypothesize the impact of the United States Supreme Court rulings on the structure and functioning of the juvenile justice system in the future

GRADES

Module Assignments

Welcome Module Scavenger Hunt	15 points
Plagiarism Certificate	20 points
Criminal Justice Interest Surveys (2)	10 points
Reading Quizzes (14)	140 points
Lecture Videos (14)	140 points
Final Exam	50 points

Module Assignment Points:

375

Online Activities

Crime Trends Infographic	25 points
Day in the Life of a Law Enforcement Officer	25 points
International Perspectives on the Death Penalty	25 points
Presentence Investigation Report	25 points
Juvenile Justice Timeline	25 points

Online Activity Points:

125

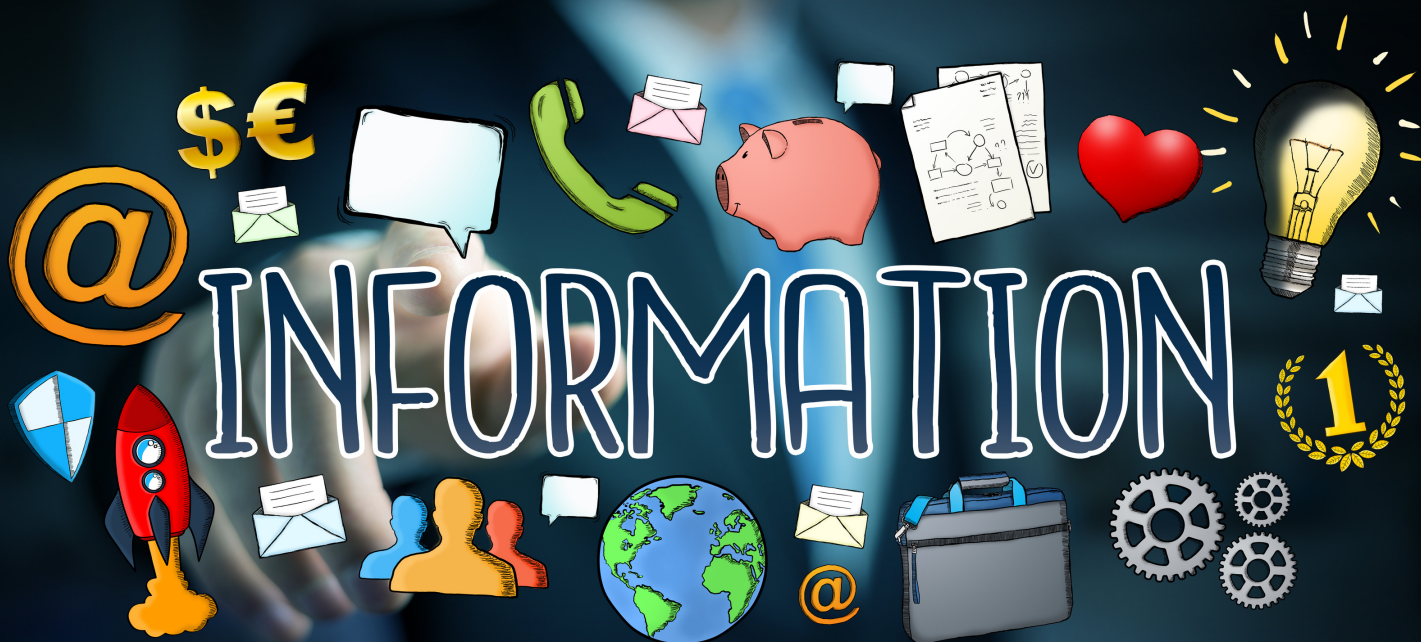
Total Points Possible

500

Grading Scale

A	450 or more points
B	400 - 449 points
C	350 - 399 points
D	300 - 349 points
F	Less than 300 points





Student Drop-In Hours

I hold regular drop-in hours each week. During these times, I can go over assignments, discuss quizzes/exams, and answer any questions about course material. If you are unable to visit me during my scheduled drop-in hours and need help, please feel free to contact me via email and set up an appointment. I can set up on-campus or video-conferencing appointments as necessary.

Professor Response Time

I try to respond to all emails and voicemails within one business day. I do not regularly check emails on weekends, holidays, and school breaks, so response time may be longer at these times. I try to grade all assignments, activities, and exams within two weeks of the due date. Much of the time you will be able to see grades sooner than the times listed. However, there are times when it takes longer to grade assignments, so please be patient if you do not see your grades immediately.

Make-Up Assignments

You will be given the opportunity to make-up missed quizzes, exams, and assignments for excused absences only. Excused absences include documented emergencies (e.g. doctor's note, subpoena) or school-related activity. Vacations, regularly scheduled doctor's appointments, and work schedules do not qualify as exceptional reasons and will not be accepted as an excused absence. There are multiple extra credit assignments available that can be used to make up points lost during unexcused absences.

Assignment Submissions

All assignments must be submitted by time/date listed on the course schedule. No late assignments will be allowed unless there are emergency situations and documentation is provided. I highly encourage you to start working on your assignments early. This ensures you have time to contact the appropriate person(s) if unforeseen technological issues impact your ability to complete the assignment. Technical problems, even if they are not your fault, do not automatically qualify you for an extension or a "do-over" for the assignment.

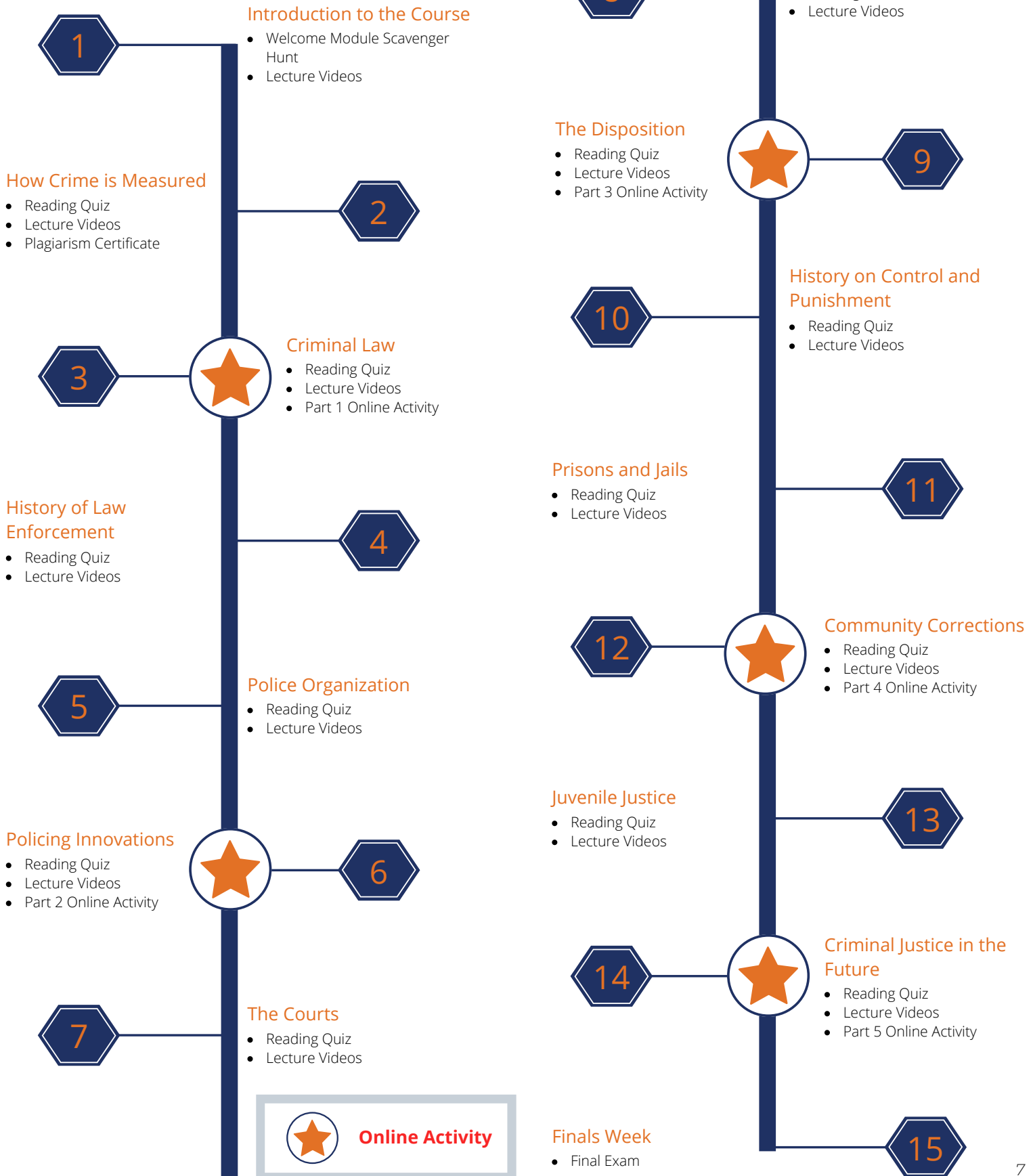
"Remember, you have within you the *strength*, the *patience*, and the *passion* to reach for the stars to change the world."

**Harriet
Tubman**

COVID-19 Notice

I understand that the COVID-19 pandemic may affect your ability to complete the coursework and/or meet class deadlines. During the course, if you experience any illness or other concerns relating to COVID-19, please reach out to me by email to discuss your situation. My goal is to help you be successful in the course, so I am happy to discuss alternative options if it becomes necessary.

CLASS SCHEDULE





RESOURCES

Academic Advising Center

University Center (UC) 440
903.565.5718
advising@uttyler.edu

Bookstore

University Center (UC)
903.566.7070
bookstore@uttyler.edu

Campus Activities

University Center (UC) 3400
903.565.5796
getconnected@uttyler.edu

Campus Computing & Technology Support

Ratcliff Building North (RBN) 3022
903.565.5555
itsupport@uttyler.edu

Muntz Library

Robert R. Muntz Library (LIB)
903.566.7342
library@uttyler.edu

Military & Veterans Success Center

University Center (UC) 3440
903.565.5972
mvsc@uttyler.edu

Student Accessibility Office

University Center (UC) 3150
903.565.7079
saroffice@uttyler.edu

Student Health & Wellness

University Health Clinic (UHC) 147
903.565.5728
wellness@uttyler.edu

University Counseling Center

University Center (UC) 3170
903.565.5746 (for appointments)

UT Tyler Police Department

University Service Center (USC) 125
903.566.7300
police@uttyler.edu

Writing Center

College of Arts and Sciences (CAS) 202
903.565.5995
writingcenter@uttyler.edu

One Stop Service Center

Stewart Hall (STE) 230
903.566.7180
enroll@uttyler.edu or cashiers@uttyler.edu
One Stop Service Center includes:

- Cashier's Office
- Enrollment Services
- Financial Aid
- Student Business Services

Crisis Help Line
Available 24/7
903.566.7254





UT Tyler Policies

UT Tyler Honor Code

Every member of the UT Tyler community joins together to embrace: Honor and integrity that will not allow me to lie, cheat, or steal, nor to accept the actions of those who do.

Students Rights and Responsibilities

To know and understand the policies that affect your rights and responsibilities as a student at UT Tyler, please follow this link: www.uttyler.edu/wellness/rightsresponsibilities.php

Campus Carry

We respect the right and privacy of students 21 and over who are duly licensed to carry concealed weapons in this class. License holders are expected to behave responsibly and keep a handgun secure and concealed. More information is available at <http://www.uttyler.edu/about/campus-carry/index.php>.

UT Tyler a Tobacco-Free University

All forms of tobacco will not be permitted on the UT Tyler main campus, branch campuses, and any property owned by UT Tyler. This applies to all members of the University community, including students, faculty, staff, University affiliates, contractors, and visitors. Forms of tobacco not permitted include cigarettes, cigars, pipes, water pipes (hookah), bidis, kreteks, electronic cigarettes, smokeless tobacco, snuff, chewing tobacco, and all other tobacco products.

There are several cessation programs available to students looking to quit smoking, including counseling, quitlines, and group support. For more information on cessation programs please visit www.uttyler.edu/tobacco-free.

Grade Replacement / Forgiveness and Census Date Policies

Students repeating a course for grade forgiveness (grade replacement) must file a Grade Replacement Contract with the Enrollment Services Center (ADM 230) on or before the Census Date of the semester in which the course will be repeated. Grade Replacement Contracts are available in the Enrollment Services Center or at <http://www.uttyler.edu/registrar>. Each semester's Census Date can be found on the Contract itself, on the Academic Calendar, or in the information pamphlets published each semester by the Office of the Registrar.

Failure to file a Grade Replacement Contract will result in both the original and repeated grade being used to calculate your overall grade point average. Undergraduates are eligible to exercise grade replacement for only three course repeats during their career at UT Tyler; graduates are eligible for two grade replacements. Full policy details are printed on each Grade Replacement Contract.

The Census Date is the deadline for many forms and enrollment actions of which students need to be aware. These include:

1. Submitting Grade Replacement Contracts, Transient Forms, requests to withhold directory information, approvals for taking courses as Audit, Pass/Fail or Credit/No Credit.
2. Receiving 100% refunds for partial withdrawals. (There is no refund for these after the Census Date)
3. Schedule adjustments (section changes, adding a new class, dropping without a "W" grade)
4. Being reinstated or re-enrolled in classes after being dropped for non-payment
5. Completing the process for tuition exemptions or waivers through Financial Aid

State-Mandated Course Drop Policy

Texas law prohibits a student who began college for the first time in Fall 2007 or thereafter from dropping more than six courses during their entire undergraduate career. This includes courses dropped at another 2-year or 4-year Texas public college or university. For purposes of this rule, a dropped course is any course that is dropped after the census date (See Academic Calendar for the specific date).

Exceptions to the 6-drop rule may be found in the catalog. Petitions for exemptions must be submitted to the Enrollment Services Center and must be accompanied by documentation of the extenuating circumstance. Please contact the Enrollment Services Center if you have any questions.

Disability/Accessibility Services

In accordance with Section 504 of the Rehabilitation Act, Americans with Disabilities Act (ADA) and the ADA Amendments Act (ADAAA) the University of Texas at Tyler offers accommodations to students with learning, physical and/or psychological disabilities. If you have a disability, including a non-visible diagnosis such as a learning disorder, chronic illness, TBI, PTSD, ADHD, or you have a history of modifications or accommodations in a previous educational environment, you are encouraged to visit <https://hood.accessiblelearning.com/UTTyler> and fill out the New Student application. The Student Accessibility and Resources (SAR) office will contact you when your application has been submitted and an appointment with Cynthia Lowery, Assistant Director of Student Services/ADA Coordinator. For more information, including filling out an application for services, please visit the SAR webpage at <http://www.uttyler.edu/disabilityservices>, the SAR office located in the University Center, # 3150 or call 903.566.7079.

Student Absence due to Religious Observance

Students who anticipate being absent from class due to a religious observance are requested to inform the instructor of such absences by the second class meeting of the semester.

Student Absence for University-Sponsored Events and Activities

If you intend to be absent for a university-sponsored event or activity, you (or the event sponsor) must notify the instructor at least two weeks prior to the date of the planned absence. At that time the instructor will set a date and time when make-up assignments will be completed.

Social Security and FERPA Statement

It is the policy of The University of Texas at Tyler to protect the confidential nature of social security numbers. The University has changed its computer programming so that all students have an identification number. The electronic transmission of grades (e.g., via e-mail) risks violation of the Family Educational Rights and Privacy Act; grades will not be transmitted electronically.

Emergency Exits and Evacuation

Everyone is required to exit the building when a fire alarm goes off. Follow your instructor's directions regarding the appropriate exit. If you require assistance during an evacuation, inform your instructor in the first week of class. Do not re-enter the building unless given permission by University Police, Fire department, or Fire Prevention Services

UT Tyler Resources for Students

- UT Tyler Writing Center (903.565.5995), writingcenter@uttyler.edu
- UT Tyler Tutoring Center (903.565.5964), tutoring@uttyler.edu
- The Mathematics Learning Center, RBN 4021, this is the open access computer lab for math students, with tutors on duty to assist students who are enrolled in early-career courses.
- UT Tyler Counseling Center (903.566.7254)

UT Tyler Resources for Students

Disciplinary proceedings may be initiated against any student who engages in scholastic dishonesty, including, but not limited to, cheating, plagiarism, collusion, the submission for credit of any work or materials that are attributable to a third party, or in part to another person, taking an examination for another person, any act designed to give unfair advantage to a student or the attempt to commit such acts.

"Cheating" includes, but is not limited to:

- copying from another student's test paper;
- using, during a test, materials not authorized by the person giving the test;
- failure to comply with instructions given by the person administering the test;
- possession during a test of materials which are not authorized by the person giving the test, such as class notes or specifically designed "crib notes". The presence of textbooks constitutes a violation if they have been specifically prohibited by the person administering the test;
- using, buying, stealing, transporting, or soliciting in whole or part the contents of an unadministered test, test key, homework solution, or computer program;
- collaborating with or seeking aid from another student during a test or other assignment without authority;
- discussing the contents of an examination with another student who will take the examination;
- divulging the contents of an examination, for the purpose of preserving questions for use by another, when the instructors has designated that the examination is not to be removed from the examination room or not to be returned or to be kept by the student;
- substituting for another person, or permitting another person to substitute for oneself to take a course, a test, or any course-related assignment;
- paying or offering money or other valuable thing to, or coercing another person to obtain an unadministered test, test key, homework solution, or computer program or information about an unadministered test, test key, home solution or computer program;
- falsifying research data, laboratory reports, and/or other academic work offered for credit;
- taking, keeping, misplacing, or damaging the property of The University of Texas at Tyler, or of another, if the student knows or reasonably should know that an unfair academic advantage would be gained by such conduct; and
- misrepresenting facts, including providing false grades or resumes, for the purpose of obtaining an academic or financial benefit or injuring another student academically or financially.

ii. "Plagiarism" includes, but is not limited to, the appropriation, buying, receiving as a gift, or obtaining by any means another's work and the submission of it as one's own academic work offered for credit.

iii. "Collusion" includes, but is not limited to, the unauthorized collaboration with another person in preparing academic assignments offered for credit or collaboration with another person to commit a violation of any section of the rules on scholastic dishonesty.

iv. All written work that is submitted will be subject to review by plagiarism software.