

SURVEY OF FORENSIC SCIENCE

CRIJ 3301 Fall 2020 Course Syllabus



Dead Men Do Tell Tales

Course Description

Forensic science is a broad term that encompasses any scientific inquiry that is applied to the legal system. This course is designed to familiarize the student with the most common forensic disciplines including, but not limited to, criminalistics, forensic biology, forensic chemistry, and death investigation. Students will learn about the types of evidence each discipline is responsible for as well as common methods of evidence analysis and interpretation. This course will also discuss current research in forensic science as well as the challenges that modern forensic investigators face in the crime scene, laboratory, and courtroom settings.

DR. DANIELLE BAILEY

My office is in the College of Arts & Sciences building, Office 134. You can reach me at dbailey@uttyler.edu or 903.566.7432. My personal Zoom Meeting room ID is my office phone number.

I hold Online Open Hours on Thursdays from 9 a.m. to 12:00 p.m. During these times, I will be available in my personal Zoom meeting room and in my campus office. You can also schedule a virtual or on-campus appointment as needed. Please email appointment requests.

This class is taught fully online. All interactions will take place through Canvas.

Syllabus Contents

Page 2	Learning Objectives & Course Materials
Page 3	Course Assignments
Page 5	Grading Scale
Page 6	Dr. Bailey's Information
Page 7	Course Schedule
Page 8	Student Resources
Page 9	UT Tyler Course Policies

This syllabus was created to provide you with an overview of the learning expectations for this course. You can find additional details about class assignments and course policies on Canvas.



Course Learning Objectives

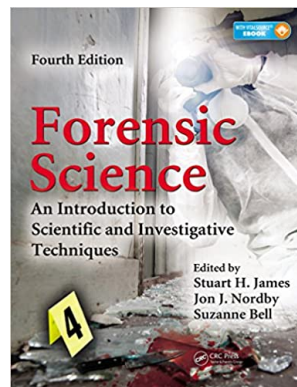
By the completion of this course, you will be able to:

- Distinguish the different forensic disciplines and the legal system within forensic science
- Compare/contrast the types of evidence each forensic discipline examines
- Discuss the historical and print development of forensic science
- Explain how forensic scientists identify, collect, and analyze forensic evidence
- Describe common forensic analysis methodologies
- Identify the appropriate type of evidence for different forensic analyses
- Apply the scientific method to forensic evidence
- Critique how modern technology enhances and limits forensic analysis
- Analyze the influence of DNA evidence has had on forensic analyses from different fields
- Identify ethical considerations for forensic scientists
- Identify the roles of coroner, medical examiner, and forensic anthropologist within forensic science.

Course Format

This course is taught entirely online. All course interactions will take place through Canvas, UT Tyler's learning management system. Video lectures are provided for each module, and there are a variety of other online technologies used to facilitate class assignments. In order to be successful, you will need to complete all online components of the course. To help you stay organized, a course schedule is provided for you in Canvas.

Required Textbook



Forensic Science: An Introduction to Scientific and Investigative Techniques 4th edition

S.H. James, J.J. Nordby, & S. Bell
ISBN: 9781439853832 (Hardback)
ISBN: 9781439853863 (E-book)

There is a 5th edition of this textbook, but it is substantially different than the 4th edition text. Please make sure you have ordered the 4th edition.

Supplementary Materials

Additional instructional materials are provided for you in the Canvas course and on Dr. Bailey's website (link below). These materials include professional associations, informational videos, and other online materials that may be helpful for you as you go through this course. Use of these materials are not required but are recommended for students seeking additional instruction or assistance with the course material.

<https://sites.google.com/view/daniellebaileyphd>



Course Assignments

Reading Quizzes

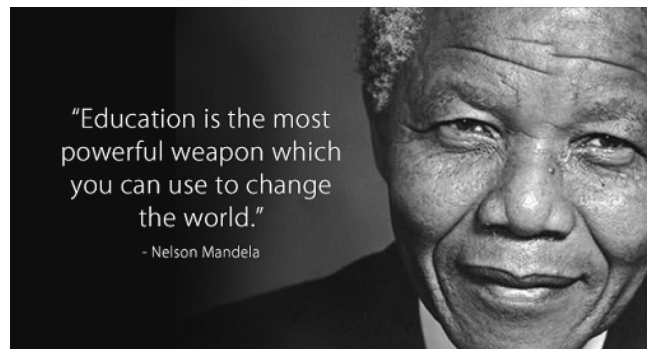
To promote retention and comprehension of the assigned reading material, you will complete a short reading quiz each week. Quizzes will consist of multiple choice and true/false questions only. You may take each quiz up to three times. Only the highest score will count towards your final grade.

Lecture Video Quizzes

All lecture material will be provided in mini-lectures focusing on different disciplines within the field of forensic science. Lecture videos include multiple choice and true/false quiz questions embedded directly into the video. Quizzes are automatically scored and entered into your Canvas gradebook. You may retake the video again for a higher score.

Class Activities

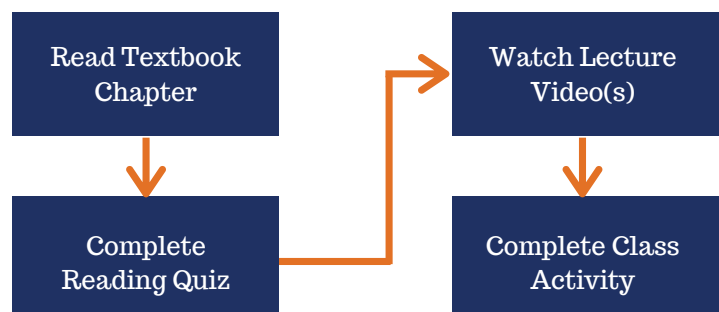
Class activities are designed to help supplement the reading and lecture material for that module. A diverse range of activities (writing, hands-on, research, etc.) will be included to appeal to different learning styles and encourage student engagement. Most class activities will be graded using a standardized rubric. Submissions will be graded based on the overall professionalism of the submission and the content of the activity itself.



Diorama of Death

One of the historical leaders in forensic science was Frances Glessner Lee, an heiress who developed miniature dioramas of real crime scenes. Her dioramas were built to scale with intense detail and were used in the mid 1900's during law enforcement training seminars. You will follow in Lee's footsteps by constructing a diorama, or a three-dimensional display, of a murder scene. You may use any material for your diorama, including clay, paper, plastic toys, etc. The only requirements are that your diorama involve a death scene and contain at least five pieces of important physical evidence. Dioramas will be photographed and shared on a class Padlet board so that you can review and comment on your classmate's dioramas.

Typical Module Structure





Forensic Misconduct Website

Jurors are usually very trustful of forensic experts, and it is therefore of very important that forensic analysts hold themselves to the highest ethical standard. Unfortunately, there are always a few bad apples, people who are willing to lie, cheat, or plant evidence to get the findings they want. Given their access to multiple cases at a time, one instance of misconduct can cause a ripple effect in the criminal justice system, leading to reopened cases, overturned convictions, and public mistrust of the entire forensic science field.

This activity will be completed in small groups. You will be assigned to a group by Dr. Bailey at the end of Module Five. Your group will create a website that documents high-profile cases of misconduct by forensic investigators. The website will be developed on Google Sites, a user-friendly, collaborative website building program.

Misconduct Cases

Each website will feature case summaries of 3 - 4 of the following people and/or agencies:

- Fred Zain, forensic chemist
- David Kofoed, crime scene investigator
- Annie Dookhan, forensic chemist
- Gary Veeder, fiber analyst
- Sandra Marie Anderson, cadaver dog handler
- Houston Crime Lab
- Joyce Gilchrist, forensic chemist
- Nika Larsen, forensic chemist
- David Harding, State Trooper
- Ana Romero, forensic analyst

Group Member Responsibilities

I expect you to adhere to the following conditions during group activities:

- 1. Notify me and your group members as early as possible if you are unable or unwilling to participate in any part of the group activity.*
- 2. Participate in your group to the best of your ability. You should expect to meet outside of class time (in person or virtually) to complete group assignments.*
- 3. Split group work evenly between all group members so that all group members contribute equally to the final product.*
- 4. Provide all requested contributions to your group before the assignment due date so that the group activity can be compiled, edited, and finalized together.*
- 5. Do not wait until the deadline to bring concerns to your group members and/or the professor.*
- 6. Bring your best self to your group.*

Group activities include both individual and group grade components. Based on the evaluation survey and unsolicited feedback, I reserve the right to adjust the group grade for any individual group member.

GRADES

Class Assignments

Syllabus Quiz	20 points
Plagiarism Certificate	10 points
Reading Quizzes (12)	120 points
Lecture Video Quizzes (17)	130 points
Class Activities (11)	110 points
Diorama of Death	50 points

Module Assignment Points:

440

Forensic Misconduct Website

Synchronous Meeting Scheduling (2)	10 points
Planning Meeting	25 points
Case Summary Rough Draft	50 points
Website Rough Draft Meeting	25 points
Final Website	90 points
Group Evaluation Survey	10 points

Group Activity Points:

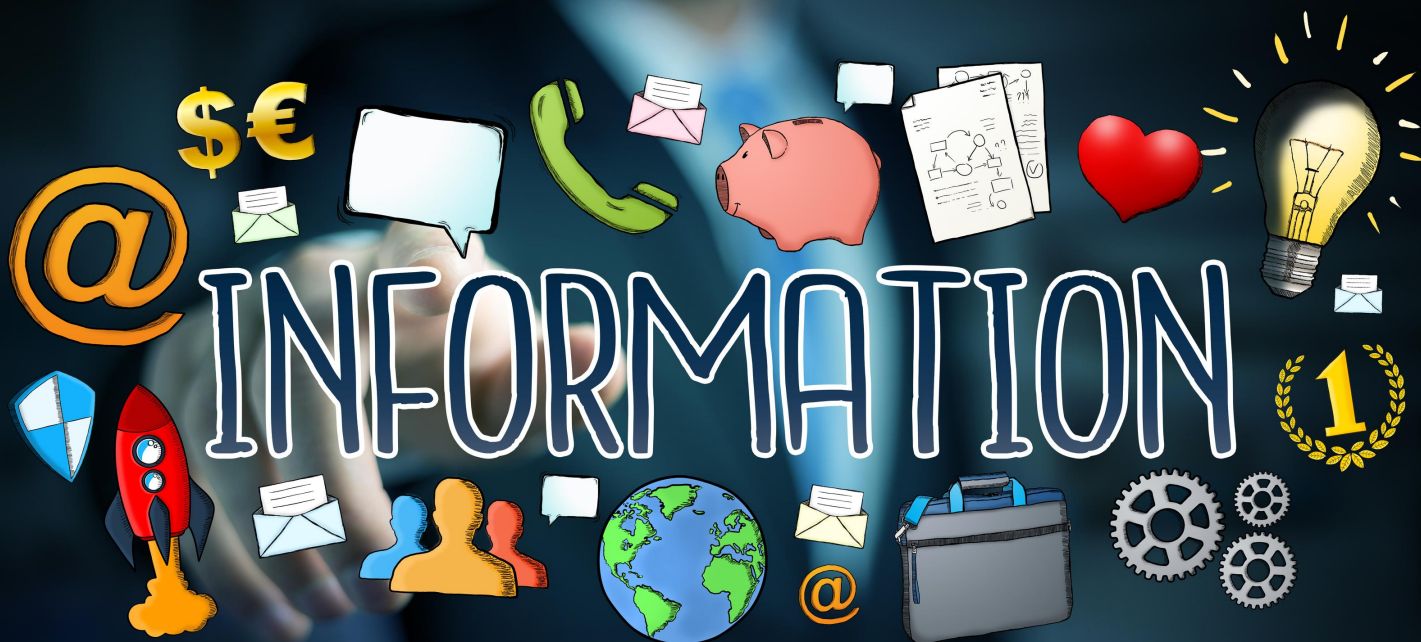
210

Total Points Possible

650

Grading Scale

A	585 or more points
B	520 - 584 points
C	455 - 519 points
D	390 - 454 points
F	Less than 390 points



Online Open Office Hours

I hold online office hours each week. During these times, I can go over assignments, discuss quizzes/exams, and answer any questions about course material. If you are unable to visit me during my scheduled office hours and need help, please feel free to contact me via email and set up an appointment. I can set up on-campus or video-conferencing appointments as necessary.

Professor Response Time

I try to respond to all emails and voicemails within one business day. I do not regularly check emails on weekends, holidays, and school breaks, so response time may be longer at these times. I try to grade all assignments, activities, and exams within two weeks of the due date. Much of the time you will be able to see grades sooner than the times listed. However, there are times when it takes longer to grade assignments, so please be patient if you do not see your grades immediately.

Make-Up Assignments

You will be given the opportunity to make-up missed quizzes, exams, and assignments for excused absences only. Excused absences include documented emergencies (e.g. doctor's note, subpoena) or school-related activity. Vacations, regularly scheduled doctor's appointments, and work schedules do not qualify as exceptional reasons and will not be accepted as an excused absence. There will be extra credit assignments available that can be used to make up points lost during unexcused absences.

Assignment Submissions

All assignments must be submitted by time/date listed on the course schedule. No late assignments will be allowed unless there are emergency situations and documentation is provided. I highly encourage you to start working on your assignments early. This ensures you have time to contact the appropriate person(s) if unforeseen technological issues impact your ability to complete the assignment. Technical problems, even if they are not your fault, do not automatically qualify you for an extension or a "do-over" for the assignment.

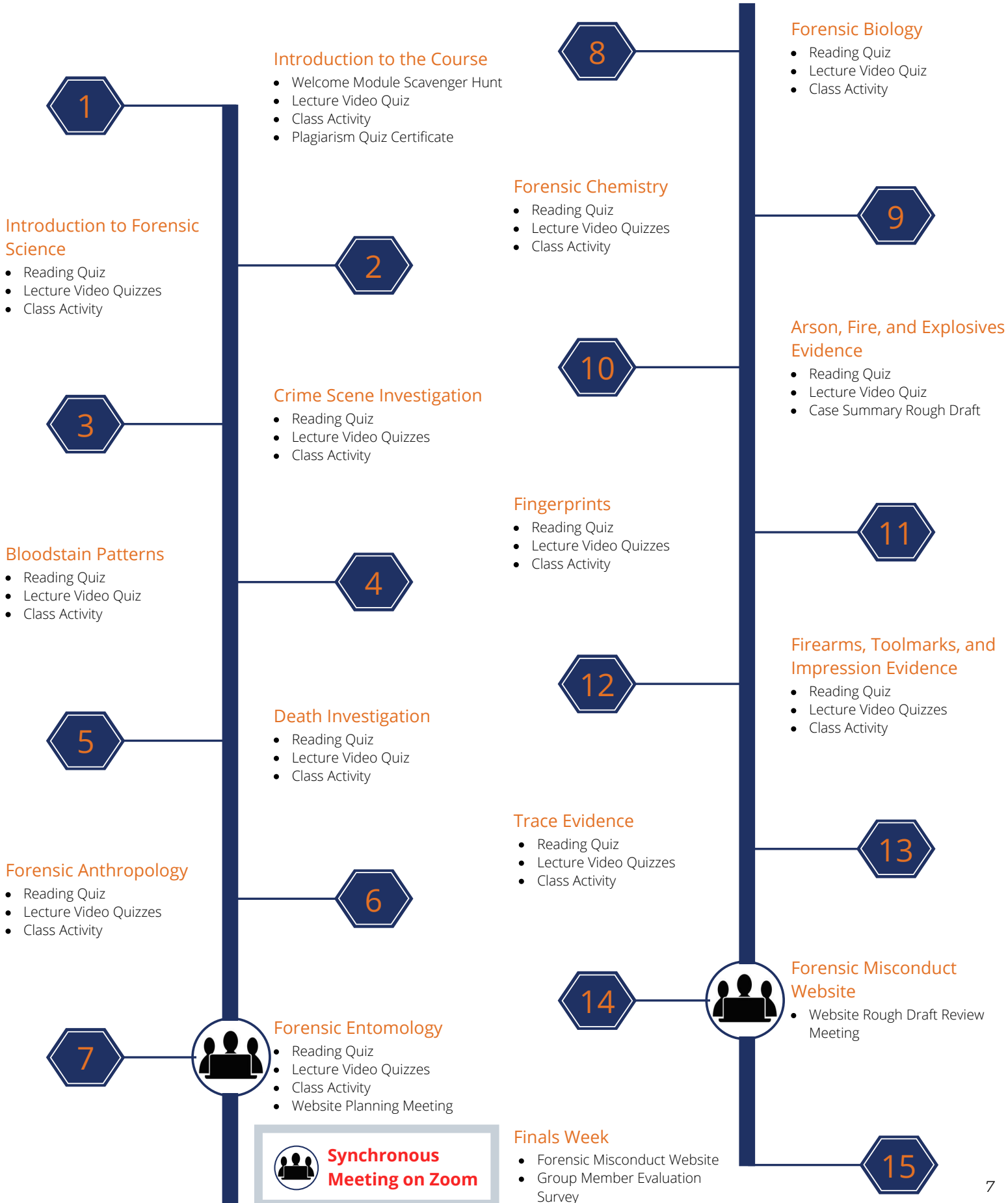
"Nothing ever comes to one, that is worth having, except as a result of hard work."

- Booker T Washington

COVID-19 Notice

I understand that the COVID-19 pandemic may affect your ability to complete the coursework and/or meet class deadlines. During the course, if you experience any illness or other concerns relating to COVID-19, please reach out to me by email to discuss your situation. My goal is to help you be successful in the course, so I am happy to discuss alternative options if it becomes necessary.

CLASS SCHEDULE



RESOURCES

Academic Advising Center

University Center (UC) 440
903.565.5718
advising@uttyler.edu

Bookstore

University Center (UC)
903.566.7070
bookstore@uttyler.edu

Campus Activities

University Center (UC) 3400
903.565.5796
getconnected@uttyler.edu

Campus Computing & Technology Support

Ratcliff Building North (RBN) 3022
903.565.5555
itsupport@uttyler.edu

Muntz Library

Robert R. Muntz Library (LIB)
903.566.7342
library@uttyler.edu

Military & Veterans Success Center

University Center (UC) 3440
903.565.5972
mvsc@uttyler.edu

Student Accessibility Office

University Center (UC) 3150
903.565.7079
saroffice@uttyler.edu

Student Health & Wellness

University Health Clinic (UHC) 147
903.565.5728
wellness@uttyler.edu

University Counseling Center

University Center (UC) 3170
903.565.5746 (for appointments)

UT Tyler Police Department

University Service Center (USC) 125
903.566.7300
police@uttyler.edu

Writing Center

College of Arts and Sciences (CAS) 202
903.565.5995
writingcenter@uttyler.edu

One Stop Service Center

Stewart Hall (STE) 230
903.566.7180
enroll@uttyler.edu or cashiers@uttyler.edu
One Stop Service Center includes:

- Cashier's Office
- Enrollment Services
- Financial Aid
- Student Business Services

Crisis Help Line
Available 24/7
903.566.7254





UT Tyler Policies

UT Tyler Honor Code

Every member of the UT Tyler community joins together to embrace: Honor and integrity that will not allow me to lie, cheat, or steal, nor to accept the actions of those who do.

Students Rights and Responsibilities

To know and understand the policies that affect your rights and responsibilities as a student at UT Tyler, please follow this link: www.uttyler.edu/wellness/rightsresponsibilities.php

Campus Carry

We respect the right and privacy of students 21 and over who are duly licensed to carry concealed weapons in this class. License holders are expected to behave responsibly and keep a handgun secure and concealed. More information is available at <http://www.uttyler.edu/about/campus-carry/index.php>.

UT Tyler a Tobacco-Free University

All forms of tobacco will not be permitted on the UT Tyler main campus, branch campuses, and any property owned by UT Tyler. This applies to all members of the University community, including students, faculty, staff, University affiliates, contractors, and visitors. Forms of tobacco not permitted include cigarettes, cigars, pipes, water pipes (hookah), bidis, kreteks, electronic cigarettes, smokeless tobacco, snuff, chewing tobacco, and all other tobacco products.

There are several cessation programs available to students looking to quit smoking, including counseling, quitlines, and group support. For more information on cessation programs please visit www.uttyler.edu/tobacco-free.

Grade Replacement / Forgiveness and Census Date Policies

Students repeating a course for grade forgiveness (grade replacement) must file a Grade Replacement Contract with the Enrollment Services Center (ADM 230) on or before the Census Date of the semester in which the course will be repeated. Grade Replacement Contracts are available in the Enrollment Services Center or at <http://www.uttyler.edu/registrar>. Each semester's Census Date can be found on the Contract itself, on the Academic Calendar, or in the information pamphlets published each semester by the Office of the Registrar.

Failure to file a Grade Replacement Contract will result in both the original and repeated grade being used to calculate your overall grade point average. Undergraduates are eligible to exercise grade replacement for only three course repeats during their career at UT Tyler; graduates are eligible for two grade replacements. Full policy details are printed on each Grade Replacement Contract.

The Census Date is the deadline for many forms and enrollment actions of which students need to be aware. These include:

1. Submitting Grade Replacement Contracts, Transient Forms, requests to withhold directory information, approvals for taking courses as Audit, Pass/Fail or Credit/No Credit.
2. Receiving 100% refunds for partial withdrawals. (There is no refund for these after the Census Date)
3. Schedule adjustments (section changes, adding a new class, dropping without a "W" grade)
4. Being reinstated or re-enrolled in classes after being dropped for non-payment
5. Completing the process for tuition exemptions or waivers through Financial Aid

State-Mandated Course Drop Policy

Texas law prohibits a student who began college for the first time in Fall 2007 or thereafter from dropping more than six courses during their entire undergraduate career. This includes courses dropped at another 2-year or 4-year Texas public college or university. For purposes of this rule, a dropped course is any course that is dropped after the census date (See Academic Calendar for the specific date).

Exceptions to the 6-drop rule may be found in the catalog. Petitions for exemptions must be submitted to the Enrollment Services Center and must be accompanied by documentation of the extenuating circumstance. Please contact the Enrollment Services Center if you have any questions.

Disability/Accessibility Services

In accordance with Section 504 of the Rehabilitation Act, Americans with Disabilities Act (ADA) and the ADA Amendments Act (ADAAA) the University of Texas at Tyler offers accommodations to students with learning, physical and/or psychological disabilities. If you have a disability, including a non-visible diagnosis such as a learning disorder, chronic illness, TBI, PTSD, ADHD, or you have a history of modifications or accommodations in a previous educational environment, you are encouraged to visit <https://hood.accessiblelearning.com/UTTyler> and fill out the New Student application. The Student Accessibility and Resources (SAR) office will contact you when your application has been submitted and an appointment with Cynthia Lowery, Assistant Director of Student Services/ADA Coordinator. For more information, including filling out an application for services, please visit the SAR webpage at <http://www.uttyler.edu/disabilityservices>, the SAR office located in the University Center, # 3150 or call 903.566.7079.

Student Absence due to Religious Observance

Students who anticipate being absent from class due to a religious observance are requested to inform the instructor of such absences by the second class meeting of the semester.

Student Absence for University-Sponsored Events and Activities

If you intend to be absent for a university-sponsored event or activity, you (or the event sponsor) must notify the instructor at least two weeks prior to the date of the planned absence. At that time the instructor will set a date and time when make-up assignments will be completed.

Social Security and FERPA Statement

It is the policy of The University of Texas at Tyler to protect the confidential nature of social security numbers. The University has changed its computer programming so that all students have an identification number. The electronic transmission of grades (e.g., via e-mail) risks violation of the Family Educational Rights and Privacy Act; grades will not be transmitted electronically.

Emergency Exits and Evacuation

Everyone is required to exit the building when a fire alarm goes off. Follow your instructor's directions regarding the appropriate exit. If you require assistance during an evacuation, inform your instructor in the first week of class. Do not re-enter the building unless given permission by University Police, Fire department, or Fire Prevention Services

UT Tyler Resources for Students

- UT Tyler Writing Center (903.565.5995), writingcenter@uttyler.edu
- UT Tyler Tutoring Center (903.565.5964), tutoring@uttyler.edu
- The Mathematics Learning Center, RBN 4021, this is the open access computer lab for math students, with tutors on duty to assist students who are enrolled in early-career courses.
- UT Tyler Counseling Center (903.566.7254)

UT Tyler Resources for Students

Disciplinary proceedings may be initiated against any student who engages in scholastic dishonesty, including, but not limited to, cheating, plagiarism, collusion, the submission for credit of any work or materials that are attributable to a third party, or in part to another person, taking an examination for another person, any act designed to give unfair advantage to a student or the attempt to commit such acts.

"Cheating" includes, but is not limited to:

- copying from another student's test paper;
- using, during a test, materials not authorized by the person giving the test;
- failure to comply with instructions given by the person administering the test;
- possession during a test of materials which are not authorized by the person giving the test, such as class notes or specifically designed "crib notes". The presence of textbooks constitutes a violation if they have been specifically prohibited by the person administering the test;
- using, buying, stealing, transporting, or soliciting in whole or part the contents of an unadministered test, test key, homework solution, or computer program;
- collaborating with or seeking aid from another student during a test or other assignment without authority;
- discussing the contents of an examination with another student who will take the examination;
- divulging the contents of an examination, for the purpose of preserving questions for use by another, when the instructors has designated that the examination is not to be removed from the examination room or not to be returned or to be kept by the student;
- substituting for another person, or permitting another person to substitute for oneself to take a course, a test, or any course-related assignment;
- paying or offering money or other valuable thing to, or coercing another person to obtain an unadministered test, test key, homework solution, or computer program or information about an unadministered test, test key, home solution or computer program;
- falsifying research data, laboratory reports, and/or other academic work offered for credit;
- taking, keeping, misplacing, or damaging the property of The University of Texas at Tyler, or of another, if the student knows or reasonably should know that an unfair academic advantage would be gained by such conduct; and
- misrepresenting facts, including providing false grades or resumes, for the purpose of obtaining an academic or financial benefit or injuring another student academically or financially.

ii. "Plagiarism" includes, but is not limited to, the appropriation, buying, receiving as a gift, or obtaining by any means another's work and the submission of it as one's own academic work offered for credit.

iii. "Collusion" includes, but is not limited to, the unauthorized collaboration with another person in preparing academic assignments offered for credit or collaboration with another person to commit a violation of any section of the rules on scholastic dishonesty.

iv. All written work that is submitted will be subject to review by plagiarism software.