

Student Information

(Fall Semesters 2001-2005)

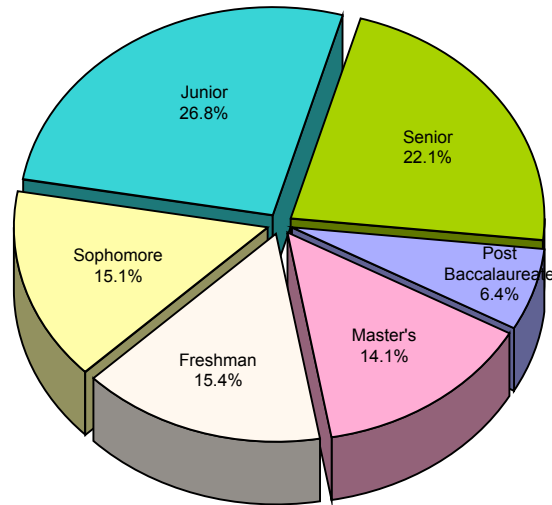
Enrollment

Total Fall Headcount

	2001		2002		2003		2004		2005	
	N	%	N	%	N	%	N	%	N	%
Freshman	365	9.8%	478	11.2%	673	14.1%	812	15.2%	892	15.4%
Sophomore	56	1.5%	393	9.2%	753	15.8%	941	17.7%	873	15.1%
Junior	1,422	38.1%	1,312	30.8%	1,121	23.5%	1,193	22.4%	1,546	26.8%
Senior	846	22.7%	858	20.2%	1,057	22.2%	1,164	21.9%	1,279	22.1%
Post Baccalaureate	315	8.4%	368	8.7%	318	6.7%	356	6.7%	371	6.4%
Master's	728	19.5%	845	19.9%	847	17.8%	860	16.1%	816	14.1%
Total Fall Headcount	3,732		4,254		4,769		5,326		5,777	

Source: CBM001 data, 2005 headcount includes 31 students displaced by Hurricane Katrina

Fall 2005 Headcount



Student Information

(Fall Semesters 2001-2005)

Full Time Equivalents

Full Time Equivalent (FTE) by Level (12 SCH)

	2001		2002		2003		2004		2005	
	SCH	FTE	SCH	FTE	SCH	FTE	SCH	FTE	SCH	FTE
Lower Division	7,660	638	15,090	1,258	22,569	1,881	27,739	2,312	29,493	2,458
Upper Division	24,992	2,083	21,884	1,824	22,279	1,857	24,258	2,022	29,135	2,428
Undergraduate	32,652	2,721	36,974	3,081	44,848	3,737	51,997	4,333	58,628	4,886
Master's	3,902	434	4,761	529	4,804	534	5,098	566	4,977	553
Total	36,554	3,155	41,735	3,610	49,652	4,271	57,095	4,900	63,605	5,439
Faculty FTE	202.30		216.39		217.07		247.35		261.38	
FTE Student to FTE Faculty Ratio	15.6		16.7		19.7		19.8		20.8	

Based on 12 SCH for undergraduates, and 9 SCH for Master's students; Source: CBM004 report; Faculty FTE uses "Instructional" Faculty Appointments 01 and 02 of the CBM008 Summary

Full Time Equivalents

Full Time Equivalent (FTE) by Level (15 SCH)

	2001		2002		2003		2004		2005	
	SCH	FTE	SCH	FTE	SCH	FTE	SCH	FTE	SCH	FTE
Lower Division	7,660	511	15,090	1,006	22,569	1,505	27,739	1,849	29,493	1,966
Upper Division	24,992	1,666	21,884	1,459	22,279	1,485	24,258	1,617	29,135	1,942
Undergraduate	32,652	2,177	36,974	2,465	44,848	2,990	51,997	3,466	58,628	3,909
Master's	3,902	325	4,761	397	4,804	400	5,098	425	4,977	415
Total	36,554	2,502	41,735	2,862	49,652	3,390	57,095	3,891	63,605	4,323
Faculty FTE	202.30		216.39		217.07		247.35		261.38	
FTE Student to FTE Faculty Ratio	12.4		13.2		15.6		15.7		16.5	

Based on 15 SCH for undergraduates, and 12 SCH for Master's students; Source: CBM004 report; Faculty FTE uses "Instructional" Faculty Appointments 01 and 02 of the CBM008 Summary

Student Information

(Fall Semesters 2001-2005)

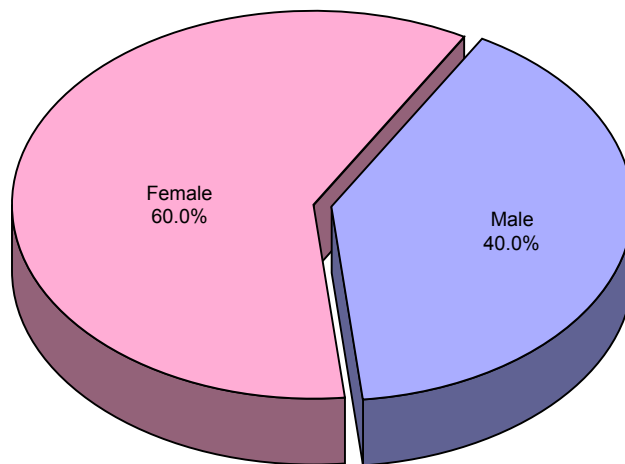
Enrollment

Gender - All Students

	2001		2002		2003		2004		2005	
	N	%	N	%	N	%	N	%	N	%
Male	1,281	34.3%	1,563	36.7%	1,810	38.0%	2,063	38.7%	2,311	40.0%
Female	2,451	65.7%	2,691	63.3%	2,959	62.0%	3,263	61.3%	3,466	60.0%
Total	3,732		4,254		4,769		5,326		5,777	

Source: CBM001 data, 2005 headcount includes 31 students displaced by Hurricane Katrina

Fall 2005 Enrollment



Student Information

(Fall Semesters 2001-2005)

Enrollment

Gender - Undergraduate Students (includes postbaccalaureate)

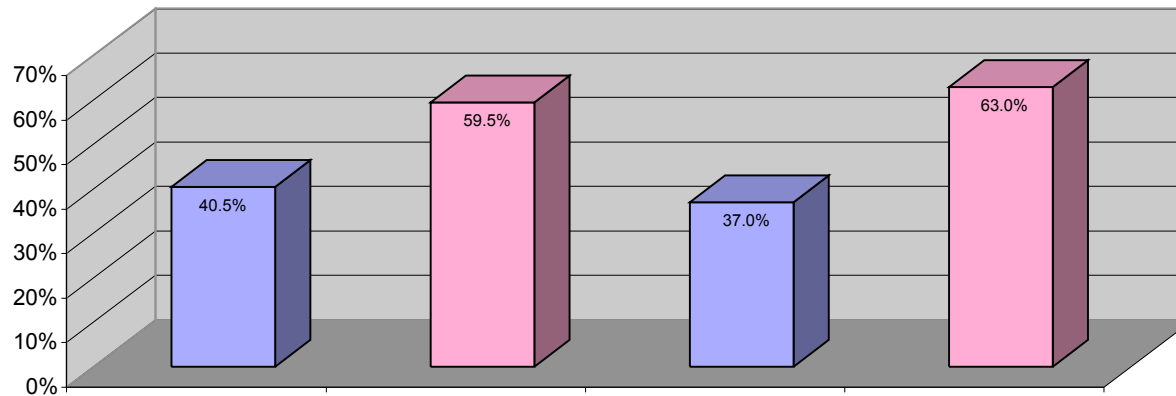
	2001		2002		2003		2004		2005	
	N	%	N	%	N	%	N	%	N	%
Male	1,029	34.3%	1,269	37.2%	1,516	38.7%	1,769	39.6%	2,009	40.5%
Female	1,975	65.7%	2,140	62.8%	2,406	61.3%	2,697	60.4%	2,952	59.5%
Total	3,004		3,409		3,922		4,466		4,961	

Gender - Master's Students

	2001		2002		2003		2004		2005	
	N	%	N	%	N	%	N	%	N	%
Male	252	34.6%	294	34.8%	294	34.7%	294	36.0%	302	37.0%
Female	476	65.4%	551	65.2%	553	65.3%	566	69.4%	514	63.0%
Total	728		845		847		860		816	

Source: CBM001 data, 2005 headcount includes 31 students displaced by Hurricane Katrina

Fall 2005 Gender



Student Information

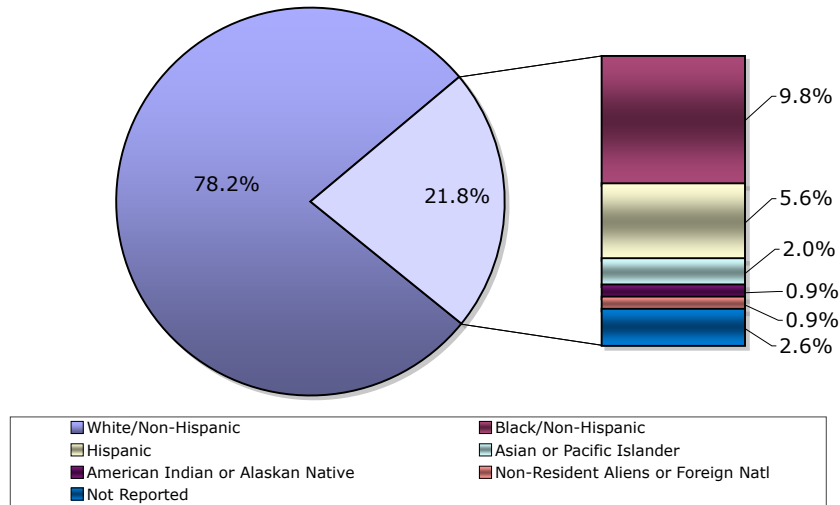
(Fall Semesters 2001-2005)

Enrollment Ethnicity-All Students

	2001		2002		2003		2004		2005	
	N	%	N	%	N	%	N	%	N	%
White/Non-Hispanic	3,121	83.6%	3,527	82.9%	3,872	81.3%	4,220	79.2%	4,515	78.2%
Black/Non-Hispanic	338	9.1%	364	8.6%	442	9.3%	511	9.6%	566	9.8%
Hispanic	138	3.7%	167	3.9%	221	4.6%	257	4.8%	325	5.6%
Asian or Pacific Islander	45	1.2%	64	1.5%	64	1.3%	99	1.9%	115	2.0%
American Indian or Alaskan Native	40	1.1%	35	0.8%	25	0.5%	49	0.9%	53	0.9%
Non-Resident Aliens or Foreign Natl	44	1.2%	61	1.4%	72	1.5%	69	1.3%	54	0.9%
Not Reported	6	0.2%	36	0.8%	73	1.5%	121	2.3%	149	2.6%
Total	3,732		4,254		4,769		5,326		5,777	

Source: CBM001 data, 2005 headcount includes 31 students displaced by Hurricane Katrina

Fall 2005 Ethnic Origin



Student Information

(Fall Semesters 2001-2005)

Enrollment

Ethnicity - Undergraduate Students (includes postbaccalaureate)

	2001		2002		2003		2004		2005	
	N	%	N	%	N	%	N	%	N	%
White/Non-Hispanic	2,530	84.2%	2,834	83.1%	3,168	80.8%	3,529	79.0%	3,865	77.9%
Black/Non-Hispanic	268	8.9%	290	8.5%	372	9.5%	430	9.6%	489	9.9%
Hispanic	109	3.6%	137	4.0%	189	4.8%	233	5.2%	299	6.0%
Asian or Pacific Islander	31	1.0%	49	1.4%	50	1.3%	76	1.7%	94	1.9%
American Indian or Alaskan Native	33	1.1%	27	0.8%	24	0.6%	43	1.0%	51	1.0%
Non-Resident Aliens or Foreign Natl	28	0.9%	47	1.4%	62	1.6%	60	1.3%	41	0.8%
Not Reported	5	0.2%	25	0.7%	57	1.5%	95	2.1%	122	2.5%
Total	3,004		3,409		3,922		4,466		4,961	

Source: CBM001 data, 2005 headcount includes 31 students displaced by Hurricane Katrina

Ethnicity - Master's Students

	2001		2002		2003		2004		2005	
	N	%	N	%	N	%	N	%	N	%
White/Non-Hispanic	591	81.2%	693	82.0%	704	83.1%	691	80.3%	650	79.7%
Black/Non-Hispanic	70	9.6%	74	8.8%	70	8.3%	81	9.4%	77	9.4%
Hispanic	29	4.0%	30	3.6%	32	3.8%	24	2.8%	26	3.2%
Asian or Pacific Islander	14	1.9%	15	1.8%	14	1.7%	23	2.7%	21	2.6%
American Indian or Alaskan Native	7	1.0%	8	0.9%	1	0.1%	6	0.7%	2	0.2%
Non-Resident Aliens or Foreign Natl	16	2.2%	14	1.7%	10	1.2%	9	1.0%	13	1.6%
Not Reported	1	0.1%	11	1.3%	16	1.9%	26	3.0%	27	3.3%
Total	728		845		847		860		816	

Source: CBM001 data

Student Information

(Fall Semesters 2001-2005)

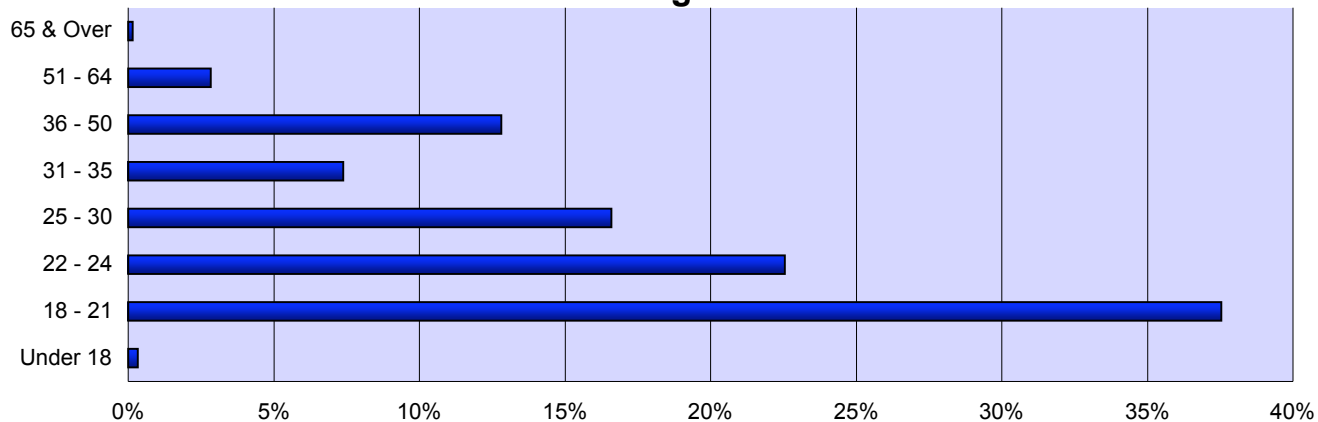
Enrollment

Age - All Students

	2001		2002		2003		2004		2005	
	N	%	N	%	N	%	N	%	N	%
Under 18	17	0.5%	24	0.6%	33	0.7%	26	0.5%	18	0.3%
18 - 21	958	25.7%	1,185	27.9%	1,578	33.1%	1,893	35.5%	2,167	37.5%
22 - 24	768	20.6%	831	19.5%	939	19.7%	1,076	20.2%	1,302	22.5%
25 - 30	739	19.8%	836	19.7%	866	18.2%	956	17.9%	957	16.6%
31 - 35	390	10.5%	416	9.8%	415	8.7%	432	8.1%	425	7.4%
36 - 50	713	19.1%	790	18.6%	783	16.4%	769	14.4%	739	12.8%
51 - 64	140	3.8%	158	3.7%	148	3.1%	167	3.1%	162	2.8%
65 & Over	7	0.2%	14	0.3%	7	0.1%	7	0.1%	7	0.1%
Total	3,732		4,254		4,769		5,326		5,777	

Source: CBM001 data, 2005 headcount includes 31 students displaced by Hurricane Katrina

Fall 2005 Age of Students



Student Information

(Fall Semesters 2001-2005)

Enrollment

Age - Undergraduate (includes postbaccalaureate)

	2001		2002		2003		2004		2005	
	N	%	N	%	N	%	N	%	N	%
Under 18	17	0.6%	24	0.7%	33	0.8%	26	0.6%	18	0.4%
18 - 21	956	31.8%	1,183	34.7%	1,572	40.1%	1,884	42.2%	2,162	43.6%
22 - 24	668	22.2%	716	21.0%	810	20.7%	938	21.0%	1,151	23.2%
25 - 30	538	17.9%	609	17.9%	635	16.2%	727	16.3%	754	15.2%
31 - 35	278	9.3%	276	8.1%	291	7.4%	301	6.7%	293	5.9%
36 - 50	457	15.2%	495	14.5%	491	12.5%	483	10.8%	476	9.6%
51 - 64	87	2.9%	96	2.8%	85	2.2%	101	2.3%	104	2.1%
65 & Over	3	0.1%	10	0.3%	5	0.1%	6	0.1%	3	0.1%
Total	3,004		3,409		3,922		4,466		4,961	

Source: CBM001 data, 2005 headcount includes 31 students displaced by Hurricane Katrina

Age - Master's Students

	2001		2002		2003		2004		2005	
	N	%	N	%	N	%	N	%	N	%
18 - 21	2	0.3%	2	0.2%	6	0.7%	9	1.0%	5	0.6%
22 - 24	100	13.7%	115	13.6%	129	15.2%	138	16.0%	151	18.5%
25 - 30	201	27.6%	227	26.9%	231	27.3%	229	26.6%	203	24.9%
31 - 35	112	15.4%	140	16.6%	124	14.6%	131	15.2%	132	16.2%
36 - 50	256	35.2%	295	34.9%	292	34.5%	286	33.3%	263	32.2%
51 - 64	53	7.3%	62	7.3%	63	7.4%	66	7.7%	58	7.1%
65 & Over	4	0.5%	4	0.5%	2	0.2%	1	0.1%	4	0.5%
Total	728		845		847		860		816	

Source: CBM001 data

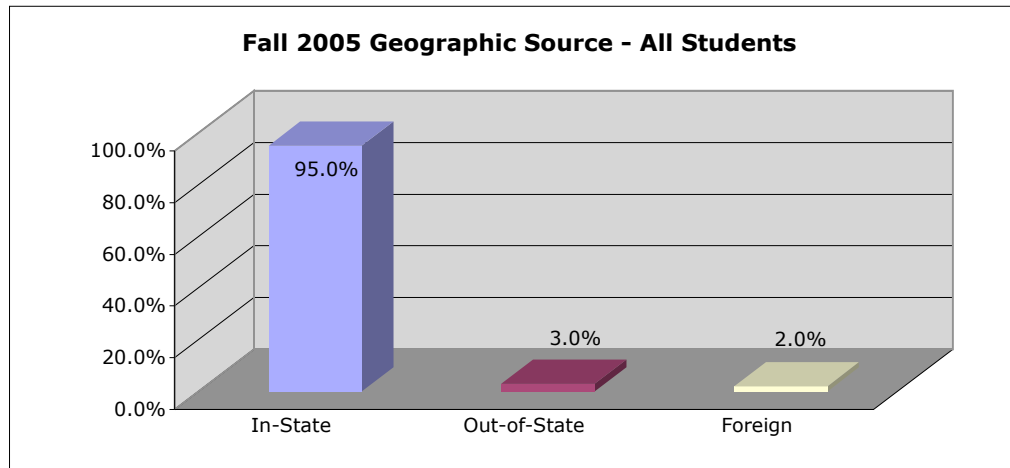
Student Information

(Fall Semesters 2001-2005)

Enrollment by Geographic Source - All Students

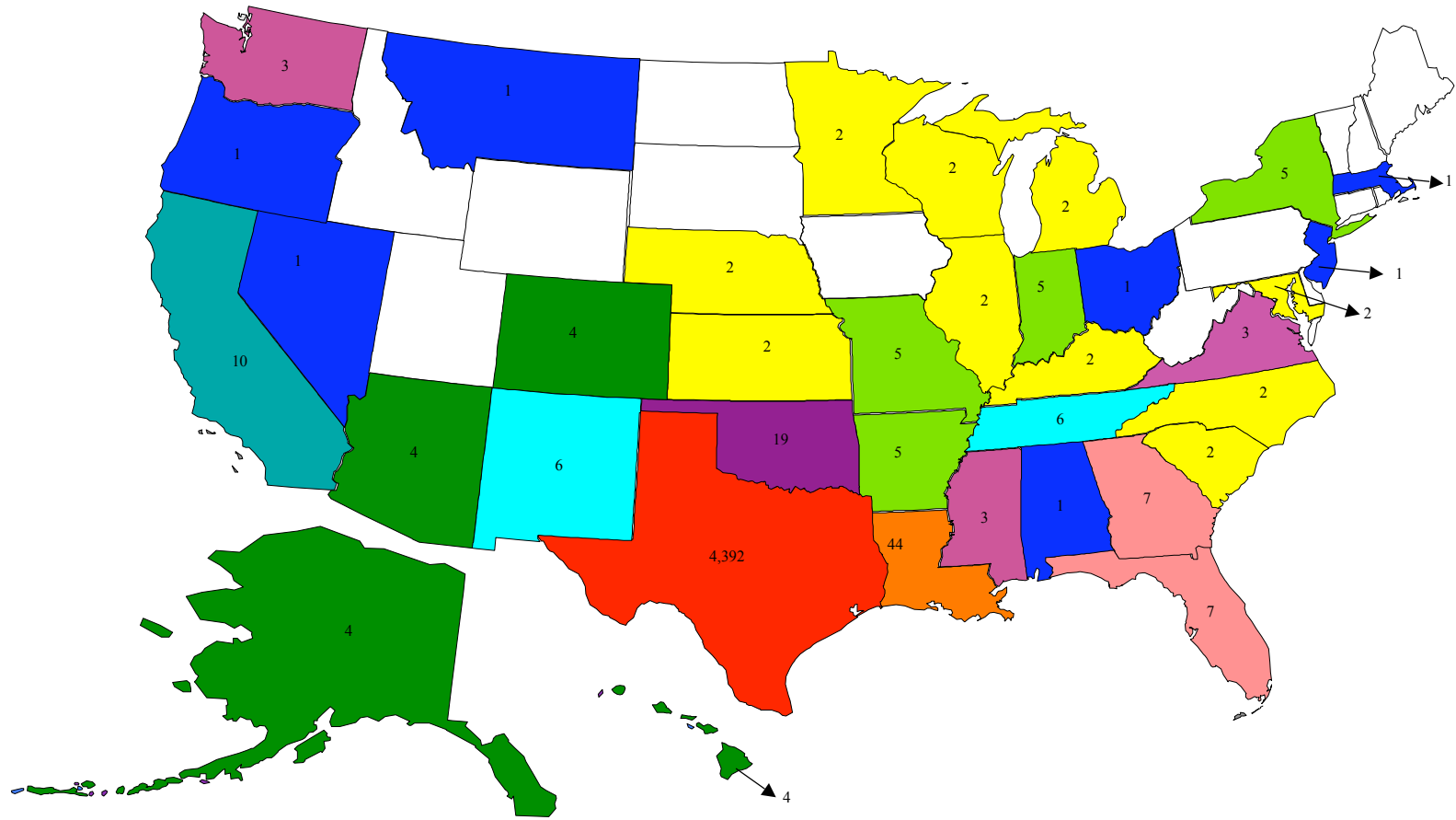
	2001		2002		2003		2004		2005	
	N	%	N	%	N	%	N	%	N	%
In-State	3,600	96.5%	4,085	96.0%	4,545	95.3%	5,045	94.7%	5,488	95.0%
Out-of-State	64	1.7%	69	1.6%	118	2.5%	158	3.0%	171	3.0%
Foreign	68	1.8%	100	2.4%	106	2.2%	123	2.3%	118	2.0%
Total	3,732		4,254		4,769		5,326		5,777	

Source: CBM001 data, 2005 headcount includes 31 students displaced by Hurricane Katrina



Student Information

Fall 2005 State of Residence - All Students



Student Information

(Fall Semesters 2001-2005)

Enrollment

from Counties in East Texas Planning Region--All Students

	2001		2002		2003		2004		2005	
	N	% of Total In-State Headcount	N	% of Total In-State Headcount	N	% of Total In-State Headcount	N	% of Total In-State Headcount	N	% of Total In-State Headcount
Anderson	151	4.2%	178	4.4%	191	4.2%	210	4.2%	235	4.3%
Camp	21	0.6%	24	0.6%	26	0.6%	22	0.4%	25	0.5%
Cherokee	144	4.0%	157	3.8%	181	4.0%	192	3.8%	212	3.9%
Gregg	450	12.5%	506	12.4%	533	11.7%	544	10.8%	526	9.6%
Harrison	112	3.1%	134	3.3%	146	3.2%	151	3.0%	158	2.9%
Henderson	223	6.2%	261	6.4%	235	5.2%	253	5.0%	245	4.5%
Marion	8	0.2%	10	0.2%	8	0.2%	17	0.3%	11	0.2%
Panola	50	1.4%	52	1.3%	49	1.1%	45	0.9%	57	1.0%
Rains	1	0.0%	0	0.0%	2	0.0%	6	0.1%	8	0.1%
Rusk	130	3.6%	149	3.6%	147	3.2%	151	3.0%	173	3.2%
Smith	1,345	37.4%	1,522	37.3%	1,622	35.7%	1,775	35.2%	1,813	33.0%
Upshur	126	3.5%	144	3.5%	140	3.1%	148	2.9%	153	2.8%
Van Zandt	129	3.6%	136	3.3%	150	3.3%	160	3.2%	170	3.1%
Wood	114	3.2%	124	3.0%	122	2.7%	125	2.5%	147	2.7%
<i>14-County East Texas State Planning Region</i>	3,004	83.4%	3,397	83.2%	3,552	78.2%	3,799	75.3%	3,933	71.7%
Total In-State Headcount	3,600		4,085		4,545		5,045		5,488	
Total Headcount	3,732		4,254		4,769		5,326		5,777	

Source: CBM001 data, 2005 headcount includes 31 students displaced by Hurricane Katrina

Student Information

Fall 2005 Enrollment from East Texas Planning Region

