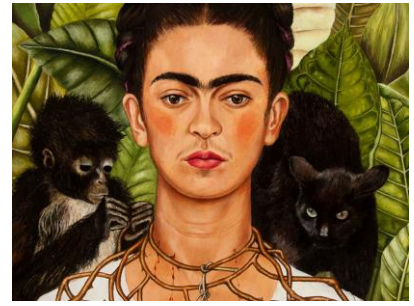


ART 4391 – 002 and 5391 – 002 Syllabus ~ Frida Kahlo: Art, Life & Death~

Fall 2023 Tues. & Thurs. 9:30 am – 10:50 pm
Room: ARC, room 114

Associate Professor of Art History: Dr. Elizabeth Lisot



Office Hours: Tues & Thurs, 12:30-1:30 pm, and by appt. Phone (903) 566-7484

Office: ARC-116, email: elisot@uttyler.edu. **Preferred method to contact is Canvas inbox or email.**

COURSE DESCRIPTION: This course is focused on the Mexican female artist, Frida Kahlo (1907-1954). We will read a biography, Kahlo's own journal and a text focused on her art. Frida Kahlo's life was filled with pain, beauty, love and sorrow, all of which contributed to her artistic production. Students will give PowerPoint presentations based upon assigned readings and produce two papers, the final being a research paper on a topic about Kahlo / her artworks of their choice.

COURSE OBJECTIVES: to familiarize students with significant contribution made by Frida Kahlo to not only Mexican art, but internationally. The historical and political context of Frida Kahlo's life will help students understand her artworks to a greater degree. In addition, graduate students will achieve a masters-level understanding of a chosen artwork, subject or the artist. This course is intended to develop critical thinking skills through discussion and writing assignments.

CLASS FORMAT: Face-to-face: power-point lectures given by the professor and students, group discussions on readings - led by students and the professor, and discussions on Canvas. No exams.

COURSE PREREQUISITES: ART 1301, ART 2303, ART 2304 or consent of instructor

REQUIRED TECHNOLOGY AND PROFICIENCY:

Minimum Student Skills: This course utilizes digital resources in Canvas. Students must know how to use Microsoft Word, PowerPoint and Canvas. Students must be able to download and upload complete files (doc, docx, or pdf) with text and images (jpeg), attach documents to emails or discussion postings, download and upload documents to the assignment tool in Canvas, and conduct online academic research. You will need speakers to be able to listen to the film on Frida Kahlo assigned.

Recording of Class Sessions

Class sessions may be recorded by the instructor for use by students enrolled in this course. Recordings that contain personally identifiable information or other information subject to FERPA shall not be shared with individuals not enrolled in this course unless appropriate consent is obtained from all relevant students. Class recordings are reserved only for the use of students enrolled in the course and only for educational purposes. Course recordings should not be shared outside of the course in any form without express permission.

DO NOT COME ON CAMPUS IF YOU ARE ILL. If you have been exposed or test positive for COVID-19 and had recent contact with the campus community, please contact the COVID hotline, 903.565.5999, or submit the [COVID-19 Report Form](#). Please notify Dr. Lisot that you are ill and cannot attend class. This is vitally important if you are scheduled to present.

Student Learning Outcomes (SLOs) are as follows:

UNDERGRADUATES:

Historical Identification: Students will be able to identify historical periods and stylistic development of significant artworks from the canon of historical periods customary in Western or Non-Western traditions.

Interpretation of Artworks: Students will be able to interpret works of art from formal or conceptual perspectives.

Analysis Using Art Historical Theory: Students will be able to apply art historical theory to an analysis of works of art.

Synthesize Knowledge: Students will be able to synthesize knowledge to incorporate different perspectives into their scholarship.

Scholarly Research Methods: Students will be able to conduct basic scholarly research utilizing standards and methods of the discipline.

GRADUATE STUDENTS:

Historical Identification: Students will be able to demonstrate a mastery of historical identification, including major art styles, personal artistic styles of key artists, significant movements, and important trends throughout various historical periods of American, European, or non-Western art.

Evaluate Scholarship: Students will be able to analyze and compare theoretical methodologies and scholarly perspectives when evaluating the literature of the discipline.

Analysis Using Art Historical Theory: Students will be able to analyze works of art works from multiple theoretical perspectives.

Scholarly Research Methods: Students will be able to conduct advanced scholarly research utilizing standards and methods of the discipline.

Original Scholarly Research: Students will be able to construct inquiry-based theories that build upon existing research of the discipline to create original research.

REQUIRED TEXTS:

Hayden Herrera. *Frida: The Biography of Frida Kahlo*. (London: Bloomsbury Publishing, 2002/2018)
ISBN 978-0060085896 <https://a.co/d/05MdokD> OR 978-1526605313 <https://amzn.asia/d/48NPoDB>

Frida Kahlo. Carlos Fuentes and Sarah Lowe, eds. *The Diary of Frida Kahlo: An Intimate Self-Portrait* (New York: Abrams, 2005). ISBN: 978-0810959545 <https://a.co/d/6bGTGmP>

Roxana Velásquez and Héctor Tajonar. *Frida Kahlo: The Masterworks*. (New York: Rizzoli Electa, 2022) ISBN 13: 9780500239292 <https://a.co/d/35fc1nN>

Additional reading assignments will be placed on CANVAS.

COURSE REQUIREMENTS:

Attendance & Participation in class discussions are required. You will receive an Attendance Grade, which will be marked down 5 points for every class missed. Students are required to read all assigned material and contribute to each class

discussion. Some of the readings will be in your required texts, and others will be on CANVAS.

Student PowerPoint Presentations on selected chapters, artists, artworks. You will sign up to present and lead class discussions on the readings. Outside research is encourage, but must be documented with citations within the PowerPoint presentation. Undergraduates will give TWO PowerPoint presentation; Graduate students will give THREE presentations (approx. 25-30 mins each, including discussion). *Because the class is conducted in most part as a discussion, it is expected that each student will contribute fully by asking questions and making comments.* Success in this class depends on the quality of the presentations and preparation each student does to be fully engaged in discussions. **If you are not committed to working hard, do not take this class. **IF YOU MISS YOUR ASSIGNED DATE OR TIME TO PRESENT YOU WILL RECEIVE A ZERO “0” ON THE ASSIGNMENT. NO MAKE-UPS, NO LATE PRESENTATIONS, NO EXCUSES unless documentation provided of serious illness / occurrence. There may not be another chance to give your presentation so COME AND GIVE IT ON THE DATE DUE!****

Assigned reading should be completed BEFORE the discussion / lectures for which they are assigned. Course calendar with assigned readings is on CANVAS

Online CANVAS Discussion students will watch all of the 90 min. 2020 film, *Frida Kahlo: The Icon the Artist*, directed by Ali Ray, Seventh Art Production (in Modules on our Canvas course). Students will make an original post about the documentary and then respond to two other students' post to earn full credit. Posts will have word minimums.

Writing Assignments: Each student will submit TWO (2) writing assignments, ALL uploaded up on CANVAS and checked for plagiarism. The first assignment is a critical response to an assigned reading (reading will be given in the Course Calendar) and posted on Canvas. Papers will be written according to the “Art History Writing Guidelines,” posted up on CANVAS. Second paper is a **Research Paper** (8-12 pages), which **REQUIRES** a minimum of 5 different sources of research; One of them must be a primary source for undergrads; Two of them need to be primary for grads (detailed instructions are on CANVAS). Graduate students are expected to write papers that are longer and more in-depth.

What you should strive for in your papers:

You are required to demonstrate an understanding of the readings and concepts discussed in class. Your papers must contain your own ideas and opinions. Use quotes sparingly. Never use an author's words without crediting the author. Introduce the author before quoting from him/her. You should credit an author even when paraphrasing their ideas, if you do not it is plagiarism. **NO a.i. no ChatGPT, none.**

DO YOUR OWN RESEARCH AND WRITING OR EARN A ZERO.

Graduate students must demonstrate a master's level quality of writing that integrates history, analysis and contemporary scholarship into their own assessment of art and art history. Originality of thought is required.

NO LATE PAPERS ACCEPTED

YOUR **FINAL GRADE** WILL BE CALCUCATED ON THESE PERCENTAGES:

Undergraduate % of Final Grade

Attendance &Participation	20%
1 st PowerPoint Presentation	20%
2 nd PowerPoint Presentation	20%
Canvas Discussion of film	10%
1 st Paper (2-3 pages)	10%
2 nd Paper, Research (8-10 pgs)	20%

Graduate % of Final Grade

Attendance &Participation	15%
1 ST PowerPoint Presentation	15%
2 nd PowerPoint Presentation	15%
3 rd PowerPoint Presentation	15%
Canvas Discussion of film	10%
1 st Paper (3-4 pages)	10%
2 nd Paper, Research (10-12 pgs)	20%

GRADES: will be posted on CANVAS. Students are responsible to check online to be sure that their grades have posted and are correct. If a grade is missing that means that the professor did not receive your work. Contact Dr. Lisot immediately if you think there is an error.

CONVERSION CHART FROM PERCENTAGES TO LETTER GRADES:

A	90-100%	D	60-69%
B	80-89%	F	0-59%
C	70-79%		

ETIQUETTE: Please be considerate of your professor and other students. You are free to express your opinion, but do not bully or name call. Engage in civil dialogue.

Please be sensitive to others’ beliefs and recognize that those beliefs may be different from your own. Inappropriate commentaries/statements will not be tolerated. Inappropriate behavior/comments include (but are not limited to) making discriminatory remarks against any religion, race, gender, or sexual preference, and/or making sexually explicit comments and/or jokes. Be aware that any harassment (including online) is a violation of the Student Code of Conduct. See “Manual of Policies and Procedures of Student Affairs,” Ch. 6, sub-section 6-204 “Harassment”:

d. ”Verbal harassment may consist of threats, insults, epithets, ridicule, personal attacks, or the categories of harassing sexual speech set forth in Series 200 of the Handbook of Operating Procedures, and is often based on the victim's appearance, personal characteristics, or group membership, including but not limited to race, color, religion, national origin, gender, age, disability, citizenship, veteran status, sexual orientation, gender identity, ideology, political views, or political affiliation.”

f. “The harassment that this section prohibits does not exhaust the category of speech that is unnecessary and inappropriate to vigorous debate in a diverse community of educated people. An essential part of higher education is to learn to separate substantive argument from personal offense, and to express even the deepest disagreements within standards of civility that reflect mutual respect, understanding, and sensitivity among the diverse population within the University and in the larger society.”

ACADEMIC INTEGRITY: all cheating and/or plagiarism will be treated with the utmost severity as per UT Tyler policy. Using artificial intelligence (A.I.), such as CHAT GPT (or any other AI chatbot), is considered plagiarism as it is not your own work. **DO NOT USE A.I.! THIS COURSE IS INTENDED TO DEVELOP CRITICAL THINKING AND RESEARCH SKILLS – THEREFORE YOU NEED**

TO DO THE WORK YOURSELF! Please consult [A Student Guide to Conduct and Discipline at UT Tyler](#) (available in the Office of Student Affairs) for university regulations regarding academic dishonesty: “3.22 Any student who commits an act of scholastic dishonesty is subject to discipline. Scholastic dishonesty includes but is not limited to cheating, plagiarism, collusion, the submission for credit of any work or materials that are attributable in whole or in part to another person, taking an examination for another person, any act designed to give unfair advantage to a student or the attempt to commit such acts.” **PLAGIARIZED PAPERS (any amount) WILL RECEIVE AN AUTOMATIC ZERO “0”- NO CREDIT**

Plagiarize \ˈplɑː-je-,riz also j - -\ *vb* **-rized; -riz-ing** *vt* [*plagiary*]: to steal and pass off (the ideas or words of another) as one's own : use (a created production) without crediting the source *vi*: to commit literary theft: present as new and original an idea or product derived from an existing source - **pla·gia·riz·er** *n* From: *Webster's New Collegiate Dictionary 9th ed.*, (Springfield, Ma: Merriam 1981), 870.

INFORMATION ON PLAGIARISM CONTINUED:

- a. It is unacceptable to copy something out of a book, newspaper, journal, Internet site or any printed source without citing your source. The most blatant example of this is directly copying something word for word. This includes artificial intelligence programs. It does not matter if it's only a phrase. If it is not yours, you must either not use it or place it in quotes and reference it.
- b. **If you paraphrase another person's words or ideas, you still must cite them as a source.** Do not put a paraphrase in quotes, but be sure to give the author's name, the text and the page where you found the idea. (Use normal citation format.)
- c. In the “Critical Response Papers” in which all citations are from one single source given to you by the professor, you still must use Chicago Manual citation format in a footnote to cite the author. You will be required to do some outside research to find out information about the author. This source must be cited, both in the footnote and in the bibliography. Online sources also require an accession date (date you viewed it)

IMPORTANT DATES:

Fri. Sept. 1, 2023	Census Day: last day to withdraw from class and not receive a “w” on your transcripts
Mon. Oct. 30, 2023	Last day to drop classes (no refund of tuition or fees)
Nov. 20-24, 2023	Thanksgiving Break

STUDENT RESOURCES AND UNIVERSITY POLICIES

Please see the Start Here Module or the Syllabus tab on our Canvas course for links to the full list of student resources and university policies.

A full course calendar with updated dates, assignments is posted on Canvas

ALL ASSIGNMENTS WILL BE TURNED IN ON CANVAS

This syllabus is subject to change.

NO FINAL EXAM !!!!!