

UNIVERSITY OF TEXAS AT TYLER

SCHOOL OF PERFORMING ARTS

course syllabus for

MUSI 1306.001: MUSIC APPRECIATION (3 CR HOURS) FALL 2025
MWF 12:20-1:15 pm - FAC 1009



INSTRUCTOR: Mrs. Maria Ogburn
OFFICE: FAC 2021
OFFICE PHONE: (903) 566-7450
E-MAIL (preferred): Please contact me at mogburn@uttyler.edu
OFFICE HOURS: I am available MWF 11:15 am to noon or by appointment

COURSE DESCRIPTION: This course is designed to introduce you to the process of studying “classical” music which includes a brief overview of Western music from the Middle Ages to the Modern era focusing on musical forms, historical periods and composers. Emphasis is placed on listening to representative music selections. This course fulfills the university Core Curriculum requirement in Creative Arts for all majors.

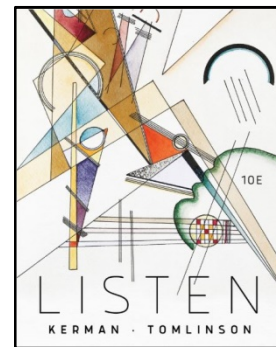
COURSE OBJECTIVES: The objective of *Music Appreciation* is for you as the student to examine the development of Western music from the earliest known sources until the present day. Students will be introduced to both sacred and secular music in all genres. The course places a strong emphasis on listening to and identifying various styles of music. Upon successful completion of the course, students will be able to:

- Apply basic music terminology to musical works relating to rhythm, melody, harmony, texture, and form through listening skills
- Recognize different instrumental families and the basic production of sound on these instruments
- Identify significant composers, works and styles for each period of Western music history
- Differentiate the various genres of music and their development through the major historical periods
- Demonstrate knowledge about a musical style by sharing it with the class in a group presentation
- Discuss music through your own musical influences/preferences at the beginning of the semester while relating your experience to the information learned at the end of the course

TEXTBOOK and OTHER REQUIRED MATERIALS:

Listen, 10th ed., by Joseph Kerman, Vivian Kerman, and Gary Tomlinson.
New York: W.W. Norton, 2023. (with Total Access)

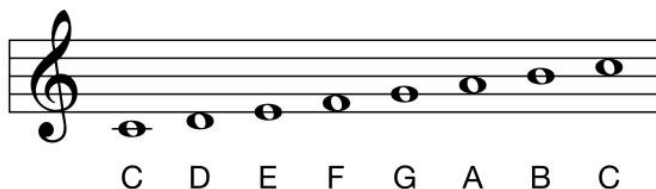
- **The textbook needs to include digital resources (Learning Tools)**
- The Ebook with Learning Tools can be also used without a physical book: ISBN 978-1-324-03944-0 and can be purchased here: <https://wnorton.com/books/9781324039365>
- Students are NOT able to rent or purchase a used book as the Music Appreciation course needs to access online materials through a NEW physical book or a NEW eBook purchase.
- Reliable internet access and computer are very important in this course.



COURSE OUTLINE:

I. Fundamentals

1. Rhythm, Meter, and Tempo
2. Pitch, Dynamics, and Tone Color
3. Scales and Melody
4. Harmony, Texture, Tonality, and Mode
5. Musical Form and Musical Style



II. Early Music: An Overview

6. The Middle Ages



III. Early Music: An Overview

7. The Renaissance

IV. The Eighteenth Century

8. The Early Baroque Period
9. PRELUDE The Late Baroque Period
10. Baroque Instrumental Music – Bach & Handel
11. Baroque Vocal Music



V. The Eighteenth Century

12. PRELUDE Music and the Enlightenment
13. The Symphony and Concerto – Mozart & Haydn
14. Classical Theater and Chamber Music

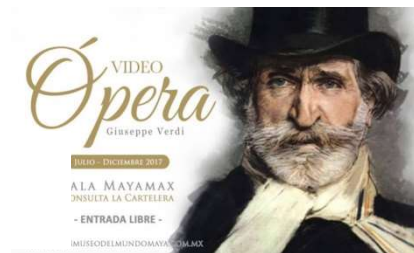


VI. The Nineteenth Century

15. Beethoven
16. PRELUDE Music After Beethoven: Romanticism
17. The Early Romantics
18. Romantic Opera – Verdi and Wagner
19. The Late Romantics

VII. The Twentieth Century and Beyond

20. PRELUDE Music and Modernism
21. Early Modernism
22. Modernism Between the Wars
23. The Late Twentieth Century
24. Music in America: Jazz



REQUIREMENTS FOR CREDIT:

General Overview: To be successful in this course, it is important to attend class on a regular basis. Concepts are cumulative and absences will make the course much more difficult to follow. The best way to absorb the material is to focus *on* the material so please refrain from texting, using your phone during class, or working on outside homework during class. If you have an emergency where you need to step out and use the phone, just let me know before or during class. Laptops or other electronic devices may be used during class to follow along with the slides and study material. I look forward to everyone learning to appreciate music by immersing yourselves *in* the music!

Attendance Policy: As a courtesy, please contact me via email *prior* to any absence. Some absences/tardies may be excused, so I will take into consideration every situation. Absences for religious holy days, active military service, and due to injury, illness, death, or major illness in a student's immediate family may be excused with documentation confirming the dates of the absence. School-sponsored activities are considered excused absences with email or written notification to me from your professors. Emergencies are handled on a case-by-case basis. If you arrive after class has begun, this will count as a tardy. Two tardies will count as one absence. If you arrive more than 15 minutes late, this will count as an absence. Attendance is 10% of your grade.

Assignment Policy: All assignments/exams are due on the days indicated. At the instructor's discretion, reduced credit will be given for work that is late or missing.

Grading:

1. EVALUATION: The grade will be determined based on these criteria, with weights calculated as indicated:

Six Online Reading/Listening Exams	30%	■ Online Exams
Group Presentation Project	15%	■ Group Presentation Project
Norton Illumine eBook Reading & Questions	12.5%	■ eBook Assignments
InQuisitive & Other Assignments	12.5%	■ InQuisitive/Other Assignments
Two Classical Music Concert Reports	10%	■ Concert Reports
Short Essay & Video on "What is Music?"	10%	■ "What is Music?"
Attendance	10%	■ Attendance

2. GRADING SCALE

90%-100%	A
80%-89%	B
70%-79%	C
60%-69%	D
Below 60%	F

PARTICIPATION: Students are responsible for regularly checking their school email, logging into the course to read the online Illumine Ebook chapters and answer embedded questions, completing online Inquisitive/other assignments, exams, the group project, read announcements, and refer to the course schedule. During class, it is encouraged that students contribute to class discussions and ask questions. If something is confusing to you, it will probably help your classmates to ask about it.

Academic Integrity: Academic dishonesty is not allowed (cheating, copying work, plagiarism, etc.).

METHODS FOR ASSESSING OUTCOMES:

Students will be evaluated through 6 Online Reading/Listening Exams Canvas using LockDown Browser. **Since these exams will be testing your knowledge, you are NOT allowed to have any books, notes, papers, etc. or any other electronic devices accessible during the exams.** Be sure to use a computer in a quiet space with a good internet connection for the online exams. Students will also be evaluated through various assignments including one short typed essay at the beginning of the semester and one short self-video on "What is Music?" at the end of the semester, weekly *InQuisitive* online skill building assignments through the Total Access 10th Edition Textbook *Listen* designed to be entertaining and educational, embedded questions within the Illumine Ebook chapters to test your comprehension, online Canvas assignments, fun in-class group activities, and one concert program attendance with brief report and one Canvas concert assignment. The concert report and short writing assignment will be graded for grammar and format as well as content. Each student is encouraged to write their own *unique* observations. Points will be taken off for answers that are the same or very similar. The concert report template will be found on Canvas Modules under "Assignments" and there will be a list of approved concerts posted at UT Tyler that are free. If you want to attend a concert outside of the list, students can consult the instructor prior to the concert attendance for approval.

METHODS OF INSTRUCTION: A variety of instruction methods will be used, ranging from lecture-style teaching on the historical musical periods, hands-on fun activities, listening and aural evaluation, basic notation, texture, musical form and online Canvas lecture assignments. The class will be structured with in-person M/W/F classes.