

# The University of Texas at Tyler

**CRIJ Victimology 3340.001**

**Spring 2023**

**Face to Face Instruction (Tuesdays/Thursday 2-3:20 PM CT)**



**Instructor:** David M. Scott, Ph.D.

**Office:** College of Arts and Sciences (CAS 133)

**Office Hours:** Tuesday and Thursdays 8-11 AM  
or by appointment

**Phone:** 903-565-6582

**Email:** [dscott@uttyler.edu](mailto:dscott@uttyler.edu)

## **Course Description:**

An analysis of the literature, research and current trends concerning the victim in the criminal justice system. Includes the history of the victims' movement, victim rights and compensation, and the impact of victimization on the individual, family, workplace, and community as well as the needed criteria for a thorough investigation of abuse.

## **Prerequisite:**

**Recommended but not required** that **CRIJ 1301 Introduction to Criminal Justice** has been taken (but not necessary for this course).

## **Course Overview:**

The purpose of this course is to expose you, the student, to a working definition of victimology in contemporary society. Additionally, this course will discuss in detail the evolution of victimology, measuring victimization, helping, and advocating for victims, and the types of crimes associated with victimization in contemporary society.

## Course Learning Objectives:

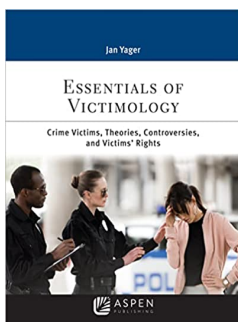
At the conclusion of this course, the student should be able to:

1. Think critically about prominent issues in victimology (L01).
2. Identify distinct types of research studies in victimology (L02).
3. Problem-solve solutions to issues in current policy and practice (L03).
4. Identify the criminal justice resources needed to prosecute and convict criminals while preserving the integrity and empowerment of the victim (L04).

**Course Materials:** This semester there are a variety of readings that you will be assigned for this course. You will be largely using one required text, but there will be other readings posted online. Please check on Canvas for each unit to identify those.

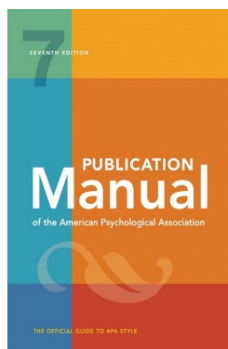
## Required Textbook

Yager, J. (2022) *Essentials of Victimology*. Aspen Publishing. ISBN: 978-1543829334



## “Highly Recommended Book”

APA. (2019). *Publication manual of the American Psychological Association* (7<sup>th</sup> ed.). Washington, DC: American Psychological Association. ISBN: 978-1-4338-3217-8



## Internet Access:

It is imperative you have reliable internet access. If you do not have it at your residence, you will be required to spend time in the Computer Lab. This is important because I will

be making important announcements in the course Canvas site and sending you emails--- but most importantly because this is an online course. Also, I will post your grades in Canvas so you will have an “at a glance view” of your current standing in the course. Additionally, you will be required to upload assignments using Canvas.

## Course Requirements

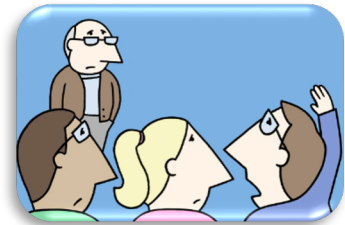
It is essential students read the selected readings detailed in the Course Schedule section of the syllabus prior to the class session. This course is designed with a seminar format in mind, which will require active participation from everyone. Each student is responsible for all the readings and discussion material as they are an integral component for success on the examinations.

## Attendance Policy:

This is an in-person or face to face course, and **you are expected to be in class** and complete all the assignments.

## Class Participation:

You are a college student, and you are expected to actively participate in this course. You will learn a lot from each other. To maximize the learning environment, it is imperative you read the weekly assignments and be prepared to openly discuss the material in class.



## Missed Exams/Late Assignments:

Unfortunately, illnesses, deaths in the family, or other traumatic events are part of life. Such events are unwelcomed and because I understand how difficult these times are, if you contact me within 24 hours of the event **and** provide documentation, I will be happy to give you a make-up exam or extend an assignment deadline. However, you will not be able to get credit for any work you miss during your absence when it is an in-class exercise.

**The general rule is I will not accept any late assignments.**

Please pay particular attention to the due dates for each assignment. All due dates are specified in the course schedule.

## Student Expectations:

You may be wondering what is expected of you? I have listed the minimum (basic) items that are in your best interests to adhere to because it will help you be successful in the course:

1. Be in class on time and remain current with the course material.
2. Read all the information in its entirety. A college student is expected to read and complete all work on time. The seminar format requires you be prepared for the class sessions and participate in the discussions.
3. Be an active participant in all classroom discussions and activities.

4. **Attend all class sessions.** This is very important because each session builds upon the previous session. In other words, your success in the course depends upon your engagement in all the learning activities.
5. Complete all assignments, projects, and assessments.
6. Submit all assignments on or before the due date.
7. If you need additional clarification, you should be contacting me as soon as practical. Do not wait until the end of the semester to ask for help. (Use the messaging function in Canvas to send me your concerns.)

## **Instructor Expectations:**

I believe teaching is a two-way street. Therefore, you should also have expectations of me. Here is what you can expect from me:

1. You should expect me to come to class prior to the start time and be prepared to engage you in the subject matter.
2. I will return all your written work in a timely fashion. The written assignments take time to grade, but I will do my best to have them returned within one week.
3. I will also return any emails I receive from you within 24 hours.

## **How to Contact Me:**

I am very approachable. I am here to help you understand the importance of becoming knowledgeable about the major metropolitan problems public managers confront today. Please ask questions in class and be engaged in the discussion. If you have any questions or concerns, please contact me at the earliest convenience possible.

Email me with any questions you may have through **my university email** account. My email is [dscott@uttyler.edu](mailto:dscott@uttyler.edu) Or, you may call my office phone at 903-565-6582. If I am not in, please leave a message. **Email is the preferred method.**

**When sending an email, please write in the subject line CRIJ 3340 (then list the item that is the subject of the email).**

## **Evaluation Procedures:**

- |                                      |            |
|--------------------------------------|------------|
| 1. Weekly discussion Questions:      | 20%        |
| 2. Assigned weekly reading quizzes:  | 20%        |
| 3. Examinations (Three examinations) | <u>60%</u> |
|                                      | 100%       |

## **Weekly Discussion Questions (20%):**

Each week there will be a weekly discussion question assignment. The key word here is **discussion**. In other words, the expectation for this assignment is for the student to read the question(s) and then respond in an essay response manner. Writing is a critical component to communication. Therefore, it is essential that you as a student have the basic understanding of the mechanics on how to write effectively and at a college level.

The weekly discussion questions will be answered in the following format:

1. Essay style format in which your responses are submitted in paragraphs, spell checked, proper punctuation, and proper grammar.
2. The question is completely answered. If the student is using the assigned textbook or an outside source, it is expected that he or she will properly cite and reference those sources in the **APA 7<sup>th</sup> Edition format**.

For example, from the assigned text:

- Research shows that Blah, blah, blah (Yager, 2022).
- According to Yager (2022), “Blah, blah, blah” (p.24). – Direct quote from the text.

**All weekly discussion questions are due by 11:59 pm every Sunday.**

### **Quizzes (20%):**

Each week there will be a reading quiz over the assigned readings for that week. The quizzes will be timed, and the content will be from only the assigned reading(s) for that particular week.

**All weekly quizzes are due by 11:59 pm every Sunday.**

### **Examinations (60%):**

There will be three examinations for this course:

- Examination I. Chapters 1-5
- Examination II. Chapters 6-10
- Examination III. Chapters 11-13 & 15

Details for the exam are in Canvas, each examination is the opportunity for you to demonstrate your knowledge and proficiency of the course concepts.

### **Missed Exams/Late Assignments:**

There are No make-up examinations without written evidence from a medical professional or an extreme family situation. **No late assignments will be accepted. No exceptions!**

### **Grading Scale:**

A (Excellent) = 90% and above

B (Good) = 80-89%

C (Nominal) = 70-79%

D (Needs Improvement) =60-69%

F (Failing) = <60%

## Tentative Course Schedule for Spring Semester 2023

Week & Learning Objectives	Reading Assignment	Class Assignments	Due Dates
Week 1 January 14, 2024 (LO1)	Ch 1: Victimology: An Overview	Class Introductions Week 1 Discussion Questions Ch 1 Quiz	Sunday January 21, 2024, by 11:59 PM CT
Week 2 January 21, 2024 (LO1, LO2)	Ch 2: An Anthropological and Historical View of Crime Victims and Victim's Rights	Week 2 Discussion Questions Ch 2 Quiz	Sunday January 21, 2024, by 11:59 PM CT
Week 3 January 28, 2024 (LO1, LO2)	Ch 3: The Discipline of Victimology Founders, Theories, and Controversies	Week 3 Discussion Questions Ch 3 Quiz	Sunday February 4, 2024, by 11:59 PM CT
Week 4 February 4, 2024 (LO1, LO2, LO3)	Ch 4: Measuring Victimization: Why and How	Week 4 Discussion Questions Ch 4 Quiz	Sunday February 11, 2024 by 11:59 PM CT.
Week 5 February 11, 2024 (LO1, LO2, LO4)	Ch 5: Victims and the Criminal Justice System: Police, Courts, and Corrections	Week 5 Discussion Questions Ch 5 Quiz	Sunday February 18, 2024 by 11:59 PM CT
Week 6 February 18, 2024 (LO1, LO2, LO3, LO4)	Ch 6: Helping the Victim: Medical, Psychological, Financial Aid, and Civil Suits	Week 6 Discussion Questions Ch 6 Quiz <b>Exam I (Ch 1-5)</b>	Sunday February 25, 2024, by 11:59 PM CT
Week 7 February 25, 2024 (LO1, LO2, LO3, LO4)	Ch 7: Primary and Secondary Victims of Homicides	Week 7 Discussion Questions Ch 7 Quiz	Sunday March 3, 2024, by 11:59 PM CT
Week 8 March 3, 2024 (LO1, LO3, LO4)	Ch 8: Property Crime Against the Victim: Robbery, Burglary, Larceny-Theft, and Criminal Mischief	Week 8 Discussion Questions Ch 8 Quiz	Sunday March 10, 2024, by 11:59 PM CT
<b>Week 9 March 10, 2024</b>	<b>Spring Break</b>	<b>Spring Break</b>	<b>Spring Break</b>
Week 10 March 17, 2024 (LO1, LO3, LO4)	Ch 9: Cybercrime Against the Victim	Week 10 Discussion Questions Ch 9 Questions	Sunday March 24, 2024, by 11:59 PM CT
Week 11 March 24, 2024 (LO1, LO3, LO4)	Ch 10: Child Victims: Abuse, Neglect, and Other Victimization	Week 11 Discussion Questions Ch 10 Questions	Sunday March 26, 2023, by 11:59 PM CT
Week 12 March 31, 2024 (LO1, LO3, LO4)	Ch 11: Teen and College Victims	Week 12 Discussion Questions Ch 11 Questions <b>Exam II (Ch 6-10)</b>	Sunday April 7, 2024, by 11:59 PM CT
Week 13 April 7, 2024 (LO1, LO2, LO3, LO4)	Ch 12: Sexual Violence: Rape, Sexual Abuse, Assault, and Harassment Victims	Week 13 Discussion Questions Ch 12 Questions	Sunday April 14, 2024, by 11:59 PM CT
Week 14 April 14, 2024 (LO1, LO2, LO3, LO4)	Ch 13: Victims of Assault, Domestic Violence, Stalking, and Elder Abuse	Week 14 Discussion Questions Ch 13 Questions	Sunday April 21, 2024, by 11:59 PM CT
Week 15 April 21, 2024 (LO1, LO2, LO3, LO4)	Ch 15: Additional Victim Situations or Populations.	Week 15 Discussion Questions Week 14 Questions	Sunday April 28, 2024, by 11:59 PM CT
Week 16 April 24, 2023 (LO1, LO2, LO3, LO4)	Final Examination Week	<b>Final Examination (Ch 11-13, &amp; 15)</b>	Friday May 3, 2024, by 11:59 PM CT

## Library Resource:

Check out the library resource page for assistance with this course and others you are taking within the Social Sciences Department. The resource page can be accessed through <http://libguides.uttyler.edu/sociology>.

## What is Plagiarism?

Plagiarism is simply using someone else's work and presenting it as your own. You must avoid this at all costs! Your credibility is on the line. Your work product must be your own. If you are borrowing someone else's facts, ideas or opinions without providing the individual proper credit you are stealing. In the academic world this is referred to as plagiarism and the penalty is severe. If the thought is not your own, you must cite your source to give proper credit. If you are borrowing someone else's words, you must enclose them in quotations as well as citing the source. Plagiarism also includes you borrowing, buying or stealing someone else's work product and presenting it as your own. DO NOT commit intellectual theft because you will compromise your academic future.



## Penalties for Plagiarism

**Should a faculty member discover that a student has committed plagiarism; the student will receive a grade of 'F' in that course and the matter will be referred to Student Conduct for possible disciplinary action.** The faculty member, however, has the right to give freshmen and sophomore students a “zero” for the assignment and to allow them to revise the assignment up to a grade of “F” (50%) if they believe that the student plagiarized out of ignorance or carelessness and not out of an attempt to deceive to earn an unmerited grade. This option is not available to juniors, seniors, or graduate students, who cannot reasonably claim ignorance of documentation rules as an excuse. As for this class, I will simply just give you a final course grade of “F.” Fair enough? Let me know if you disagree by the end of the first week of the semester.

## Statement Regarding Academic Dishonesty

**Academic dishonesty is a violation of university policy and professional standards. If compared to a violation of the criminal law, it would be classed as a felony. Academic dishonesty is defined as cheating, plagiarism, or otherwise obtaining grades under false pretenses. The penalty for academic dishonesty in this class will be no less than immediate failure of the course and a permanent student record of the reason, therefore.**

**Many students have an inadequate understanding of plagiarism. Any idea or verbiage from another source must be documented. Anytime the exact words from another author are used they must be enclosed with quotation marks and followed by a citation. However, quotations should only be used on rare occasions. Student papers should be written in the student's own words; therefore, excessive quotations will result in a failing grade.**



Make-up Tests: The *University Catalog* does not establish make-ups as a student right. Major tests are forecasted; therefore, no make-up opportunities are contemplated. Opportunities to make-up missed examinations will be provided only for exceptional reasons and must be documented (e.g., hospital records, obituaries). Make-up examinations may be in forms completely different from original examinations and will be scheduled at the convenience of the instructor.

## **Penalties for Cheating**

**Should I discover you have cheated on any assessment, you will receive a “zero” for the assessment and not be allowed to make the assignment up.** The incident will be reported to the chair of the department and (more importantly) to Student Conduct.

## **Important Information:**

Please refer to the course Canvas site on a frequent basis. You should be referring to the Canvas site prior to each class session because I may post an important announcement. Also, you must check your university email! **I do not tolerate the excuse, “I don’t check my patriot’s email or Canvas, so I never received the course announcement.”** Checking Canvas and your university email is your responsibility as a student.

## **Handguns in the Classroom:**

The University of Texas at Tyler respects the right and privacy of students who are duly licensed to carry concealed weapons in this class. License holders are expected to behave responsibly and keep a handgun secure and concealed. More information is available at <http://www.uttyler.edu/about/campus-carry/index.php>.

# UNIVERSITY POLICIES AND ADDITIONAL INFORMATION THAT MUST APPEAR IN EACH COURSE SYLLABUS

## **UT Tyler Honor Code**

Every member of the UT Tyler community joins together to embrace: Honor and integrity that will not allow me to lie, cheat, or steal, nor to accept the actions of those who do.

## **Students Rights and Responsibilities**

To know and understand the policies that affect your rights and responsibilities as a student at UT Tyler, please follow this link: <http://www.uttyler.edu/wellness/rightsresponsibilities.php>

## **Campus Carry**

We respect the right and privacy of students 21 and over who are duly licensed to carry concealed weapons in this class. License holders are expected to behave responsibly and keep a handgun secure and concealed. More information is available at <http://www.uttyler.edu/about/campus-carry/index.php>



## **UT Tyler a Tobacco-Free University**

All forms of tobacco will not be permitted on the UT Tyler main campus, branch campuses, and any property owned by UT Tyler. This applies to all members of the University community, including students, faculty, staff, University affiliates, contractors, and visitors. Forms of tobacco not permitted include cigarettes, cigars, pipes, water pipes (hookah), bidis, kreteks, electronic cigarettes, smokeless tobacco, snuff, chewing tobacco, and all other tobacco products. There are several cessation programs available to students looking to quit smoking, including counseling, quitlines, and group support. For more information on cessation programs please visit [www.uttyler.edu/tobacco-free](http://www.uttyler.edu/tobacco-free).

## **Grade Replacement/Forgiveness and Census Date Policies**

Students repeating a course for grade forgiveness (grade replacement) must file a Grade Replacement Contract with the Enrollment Services Center (ADM 230) on or before the Census Date of the semester in which the course will be repeated. Grade Replacement Contracts are available in the Enrollment Services Center or at <http://www.uttyler.edu/registrar>. Each semester's Census Date can be found on the Contract itself, on the Academic Calendar, or in the information pamphlets published each semester by the Office of the Registrar.

Failure to file a Grade Replacement Contract will result in both the original and repeated grade being used to calculate your overall grade point average. Undergraduates are eligible to exercise grade replacement for only three course repeats during their career at UT Tyler; graduates are eligible for two grade replacements. Full policy details are printed on each Grade Replacement Contract.

The Census Date is the deadline for many forms and enrollment actions of which students need to be aware. These include:

- Submitting Grade Replacement Contracts, Transient Forms, requests to withhold directory information, approvals for taking courses as Audit, Pass/Fail or Credit/No Credit.
- Receiving 100% refunds for partial withdrawals. (There is no refund for these after the Census Date)
- Schedule adjustments (section changes, adding a new class, dropping without a "W" grade)
- Being reinstated or re-enrolled in classes after being dropped for non-payment
- Completing the process for tuition exemptions or waivers through Financial Aid

## **State-Mandated Course Drop Policy**

Texas law prohibits a student who began college for the first time in Fall 2007 or thereafter from dropping more than six courses during their entire undergraduate career. This includes courses dropped at another 2-year or 4-year Texas public college or university. For purposes of this rule, a dropped course is any course that is dropped after the census date (See Academic Calendar for the specific date).

Exceptions to the 6-drop rule may be found in the catalog. Petitions for exemptions must be submitted to the Enrollment Services Center and must be accompanied by documentation of the

extenuating circumstance. Please contact the Enrollment Services Center if you have any questions.

## **Disability/Accessibility Services**

In accordance with Section 504 of the Rehabilitation Act, Americans with Disabilities Act (ADA) and the ADA Amendments Act (ADAAA) the University of Texas at Tyler offers accommodations to students with learning, physical and/or psychological disabilities. If you have a disability, including a non-visible diagnosis such as a learning disorder, chronic illness, TBI, PTSD, ADHD, or you have a history of modifications or accommodations in a previous educational environment, you are encouraged to visit <https://hood.accessiblelearning.com/UTTyler> and fill out the New Student application. The Student Accessibility and Resources (SAR) office will contact you when your application has been submitted and an appointment with Cynthia Lowery, Assistant Director of Student Services/ADA Coordinator. For more information, including filling out an application for services, please visit the SAR webpage at <http://www.uttyler.edu/disabilityservices>, the SAR office located in the University Center, # 3150 or call 903.566.7079.

## **Student Absence due to Religious Observance**

Students who anticipate being absent from class due to a religious observance are requested to inform the instructor of such absences by the second-class meeting of the semester.

## **Student Absence for University-Sponsored Events and Activities**

Revised 05/19 If you intend to be absent for a university-sponsored event or activity, you (or the event sponsor) must notify the instructor at least two weeks prior to the date of the planned absence. At that time the instructor will set a date and time when make-up assignments will be completed.

## **Social Security and FERPA Statement**

It is the policy of The University of Texas at Tyler to protect the confidential nature of social security numbers. The University has changed its computer programming so that all students have an identification number. The electronic transmission of grades (e.g., via e-mail) risks violation of the Family Educational Rights and Privacy Act; grades will not be transmitted electronically.

## **Emergency Exits and Evacuation**

Everyone is required to exit the building when a fire alarm goes off. Follow your instructor's directions regarding the appropriate exit. If you require assistance during an evacuation, inform your instructor in the first week of class. Do not re-enter the building unless given permission by University Police, Fire department, or Fire Prevention Services.

## **Student Standards of Academic Conduct**

Disciplinary proceedings may be initiated against any student who engages in scholastic dishonesty, including, but not limited to, cheating, plagiarism, collusion, the submission for credit of any work or materials that are attributable in whole or in part to another person, taking

an examination for another person, any act designed to give unfair advantage to a student or the attempt to commit such acts.

- i. “Cheating” includes, but is not limited to:
  - copying from another student’s test paper.
  - using, during a test, materials not authorized by the person giving the test.
  - failure to comply with instructions given by the person administering the test.
  - possession during a test of materials which are not authorized by the person giving the test, such as class notes or specifically designed “crib notes”. The presence of textbooks constitutes a violation if they have been specifically prohibited by the person administering the test.
  - using, buying, stealing, transporting, or soliciting in whole or part the contents of an unadministered test, test key, homework solution, or computer program.
  - collaborating with or seeking aid from another student during a test or other assignment without authority.
  - discussing the contents of an examination with another student who will take the examination.
  - divulging the contents of an examination, for the purpose of preserving questions for use by another, when the instructors has designated that the examination is not to be removed from the examination room or not to be returned or to be kept by the student.
  - substituting for another person or permitting another person to substitute for oneself to take a course, a test, or any course-related assignment.
  - paying or offering money or other valuable thing to, or coercing another person to obtain an unadministered test, test key, homework solution, or computer program or information about an unadministered test, test key, home solution or computer program.
  - falsifying research data, laboratory reports, and/or other academic work offered for credit; • taking, keeping, misplacing, or damaging the property of The University of Texas at Tyler, or of another, if the student knows or reasonably should know that an unfair academic advantage would be gained by such conduct; and
  - misrepresenting facts, including providing false grades or resumes, for the purpose of obtaining an academic or financial benefit or injuring another student academically or financially.
- ii. “Plagiarism” includes, but is not limited to, the appropriation, buying, receiving as a gift, or obtaining by any means another’s work and the submission of it as one’s own academic work offered for credit.
- iii. iii. “Collusion” includes, but is not limited to, the unauthorized collaboration with another person in preparing academic assignments offered for credit or collaboration with another person to commit a violation of any section of the rules on scholastic dishonesty.
- iv. iv. All written work that is submitted will be subject to review by plagiarism software.

### **UT Tyler Resources for Students**

- UT Tyler Writing Center (903.565.5995), [writingcenter@uttyler.edu](mailto:writingcenter@uttyler.edu)
- UT Tyler Tutoring Center (903.565.5964), [tutoring@uttyler.edu](mailto:tutoring@uttyler.edu)

- The Mathematics Learning Center, RBN 4021, this is the open access computer lab for math students, with tutors on duty to assist students who are enrolled in early-career courses.
- UT Tyler Counseling Center (903.566.7254)

These policies are also available on the university website, please click the link <https://www.uttyler.edu/academicaffairs/files/syllabuspolicy.pdf> to confirm the policies are accurate as the university makes changes to the policies periodically. From experience, changes to these policies have occurred without faculty knowledge to ensure this syllabus is updated at the same time as the university makes policy changes. Thus, please verify through the university website. <https://www.uttyler.edu/academicaffairs/files/syllabuspolicy.pdf>

**I RESERVE THE RIGHT TO MODIFY THIS SYLLABUS AT ANY TIME. THEREFORE, YOUR ATTENTION TO THE ANNOUNCEMENTS IN CANVAS ARE CRUCIAL BECAUSE IT WILL ASSIST YOU REMAIN CURRENT ON THE MATERIAL AND KNOW WHEN THE SYLLABUS MAY BE MODIFIED.**