



Hibbs Institute Research Presentation

WEDNESDAY, DECEMBER 18, 2019

11:30AM - 1:00PM

Soules College of Business, Rooms 307 and 321

Lunch will be provided by the Hibbs Institute.

Hibbs Institute for Business and Economic Research

Research Presentation

The Hibbs Institute is collaborating with a prestigious university in Mexico to conduct regional economic analysis in East Texas. The *Universidad Autonoma de Nuevo León*, located in Monterrey, has more than 200,000 students enrolled in 304 academic programs and is considered one of the top 10 in Mexico in the field of economics.

The Soules College of Business will be hosting a luncheon meeting on Wednesday, December 18 where two Ph.D. students in Economics from the *Universidad Autonoma de Nuevo León* and the Hibbs Institute will be presenting their research findings on the following studies:

**"EAST TEXAS OIL AND GAS INDUSTRY:
STRUCTURAL BREAKS AND ECONOMIC IMPACTS ON RELATED
INDUSTRIES"**
AND
**"ECONOMIC IMPACT OF HUMAN CAPITAL INVESTMENT IN TEXAS:
BACHELOR'S DEGREE VS HIGH SCHOOL DIPLOMA"**

Please RSVP by December 16

RSVP Oil and Gas

RSVP Human Capital

**Economic Impact of Human Capital
Investment in Texas:
Bachelor's Degree vs High School Diploma**

**by
Cecilia Cuellar**



Agenda

01 Introduction

- Motivation
- Economic and Education: An Overview
- Objective and Research Contribution

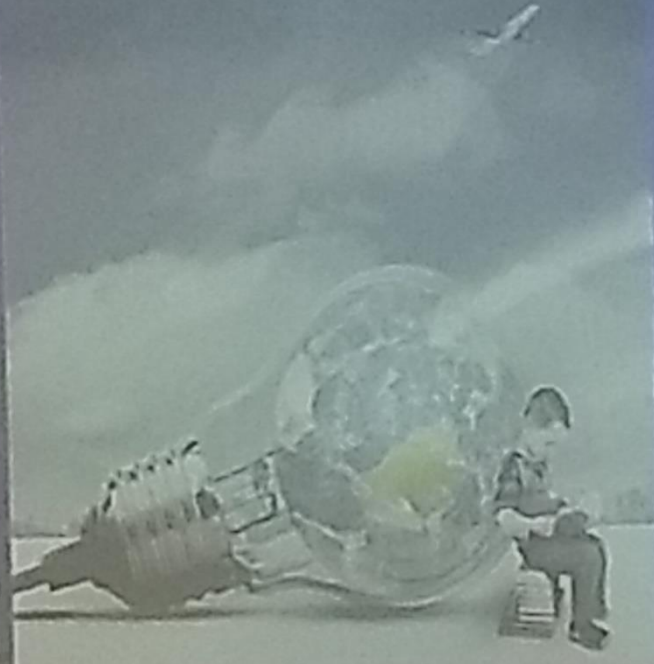
02 Methodology

- Data
- Econometric and Mathematical Methodology

03 Results

- Compound Potential: Earnings
- Economic Impact of Human Capital of UT Tyler business graduates

04 Conclusions



UT
LER

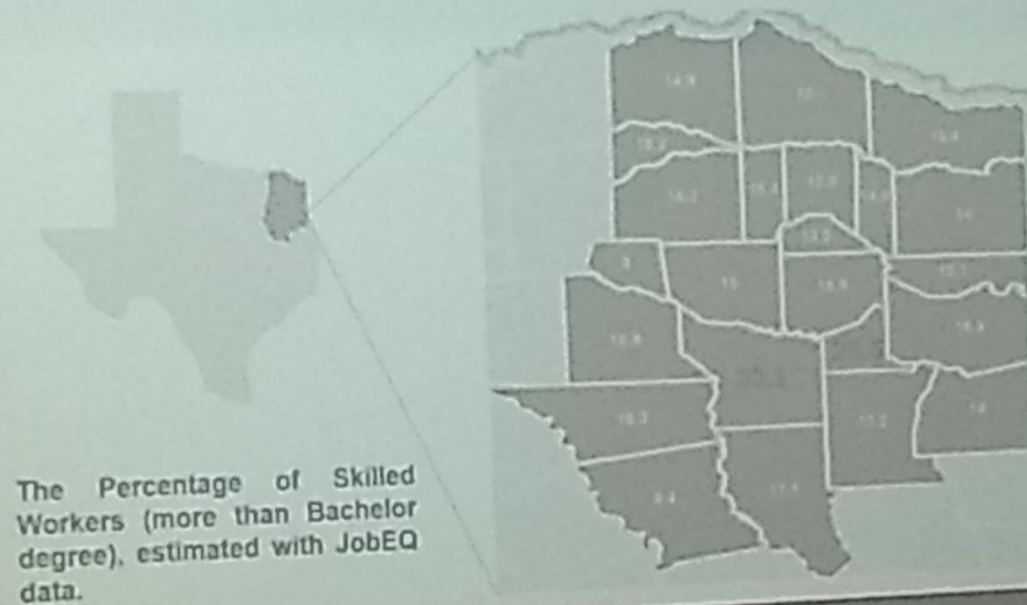
ER







Economics and Education: Overview



**East Texas Oil and Gas Industry:
Structural Breaks and Economic Impacts On
Related Industries**

**by
Berenice Sanchez**



Research Question

Under the assumption that East Texas oil & gas production presented breaks under certain time frame:

Which events caused the production changes?

What is the economic impact for employment and output into the region under study?

UT
TYLER





