

# ADMISSIONS GUIDE

DISCOVER  
**YOUR**  
F**UTURE**



**UTTyler**<sup>™</sup>

THE UNIVERSITY OF TEXAS AT TYLER

# IMPORTANT DATES

Top 25% Celebration  
**October 8, 2025**

Fall Patriot Premiere  
**November 15, 2025**

Scholarship Deadline  
**December 1, 2025**

Spring Patriot Premiere  
**April 11, 2026**

Confirmation Deadline  
**May 1, 2026**



Register for these events and  
many more at [uttyler.edu/visit](https://uttyler.edu/visit).





“Students should choose UT Tyler because it provides incredible opportunities to learn, lead and connect with others while pursuing the career of your choice.”

**Madyson Tate**

**CLASS OF 2026**

*Civil Engineering*

## FAST FACTS

**1**

COLLEGES  
& SCHOOLS

**2**

ADMISSIONS  
REQUIREMENTS

**6**

TRANSFER  
REQUIREMENTS

**7**

SCHOLARSHIPS  
& FINANCIAL AID

**8**

HOUSING & TOURS

**10**





# Discover YOU

The University of Texas at Tyler is here to help you every step of the way. In this admissions guide, you'll find information about our admissions requirements, financial aid options and top-tier academic programs. If you still have questions when you finish reading this guide, then feel free to reach out to [admissions@uttyler.edu](mailto:admissions@uttyler.edu) for help. We're here to help you *Discover YOU*.



## FAST FACTS



**1971**  
year founded

**50+**

master's and  
doctoral programs

**50+**

undergraduate  
degree programs

**100+**

student  
organizations

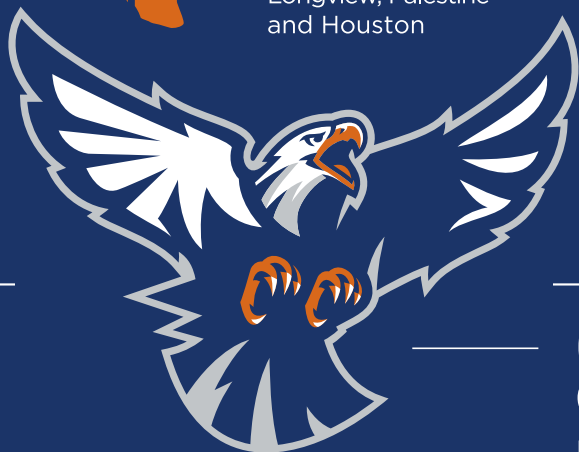
**17**

NCAA DII  
athletic teams





Tyler (main campus and Health Science Center), Longview, Palestine and Houston



## UT TYLER RITER MILLENNIUM CARILLON TOWER

The UT Tyler Riter Millennium Carillon Tower is one of the most recognizable places on campus and central to some of UT Tyler's traditions and events

## TOP EMPLOYERS

- Baylor Scott & White Health
- Christus Health
- Eastman Chemical Company
- International Paper
- TechServ Engineering and Consulting
- Texas Parks and Wildlife
- Trane Technologies
- UT Health East Texas
- Walgreens

OUR MASCOT  
SWOOP

# TALONS UP!

**5** RESIDENTIAL COMMUNITIES

**6,340**  
SQUARE FOOT  
FITNESS CENTER

## SCHOOL COLORS



BLUE



ORANGE

**167** Texas Counties represented

**45** States represented

**2** Lakes create a park-like atmosphere



**18-hole** disc golf course

**8+** Miles of outdoor trails

**260**  
ACRE CAMPUS  
LOCATED IN TYLER, TX

**10,541**  
STUDENTS



**17:1**  
student-to-faculty ratio



# COLLEGE OF ARTS & SCIENCES

The College of Arts & Sciences is a community of thinkers, creators and doers. With programs spanning the humanities, natural sciences, social sciences, communication, the arts and career preparation, our students not only launch their careers or pursue graduate studies but also serve and grow the East Texas region and the world.

Applied Arts and  
Sciences BAAS (online)  
Art BA/BFA  
Biochemistry BS  
Biology BS  
Chemistry BS  
Communication Studies BA/BS  
Criminal Justice BS  
Economics BA/BS  
English BA

History BA/BS  
Mass Communication BA/BS  
Mathematics BS  
Music BA/BM  
Political Science BA/BS  
Social Sciences BA/BS  
Social Work BSW  
Spanish BA



## Pre-Professional Pathways

Prepare for acceptance into professional schools with our many pre-professional programs. From the Academy of Future Health Professionals to the Pre-Law Academy and beyond, you'll build a critical foundation during your undergraduate academic career and take all of the required courses for admission into the schools you're targeting for the next stage of your educational journey.

# COLLEGE OF EDUCATION & PSYCHOLOGY

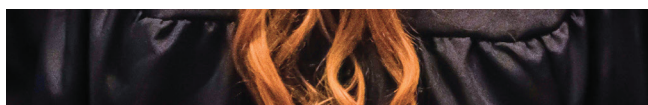
Take the first step toward making a positive impact in your community. In the College of Education & Psychology, we give you the tools to become a caring, service-oriented professional in education, psychology or counseling.

Applied Arts and Sciences  
BAAS (online)  
Education BSEd  
Early Childhood-6th Grade  
4th-8th Grade  
6th-12th Grade  
7th-12th Grade  
All Levels Certification (EC-12)  
Social Studies 4th-8th Grade  
Social Studies 7th-12th Grade  
English Language Arts and  
Reading 4th-8th Grade  
English Language Arts and  
Reading 7th-12th Grade  
Math 4th-8th Grade  
Math 7th-12th Grade  
Science 4th-8th Grade  
Physical Science 6th-12th Grade  
Life Science 7th-12th Grade  
Psychology BA/BS



# 90%

pass rate on all  
state licensure  
exams in education  
for 2024-2025





# COLLEGE OF ENGINEERING

Engineer your future and address real-world problems through scientific skills, technical creativity and business knowledge. In the College of Engineering, our students innovate and transform.

Chemical Engineering BS  
Civil Engineering BS  
Computer Engineering BS  
Construction Engineering BS  
Construction Management BS  
Electrical Engineering BS  
Mechanical Engineering BS



#62

in the nation in U.S. News & World Report's 2025 Best Undergraduate Engineering Programs (no doctorate) and the third-best state undergraduate program



# SOULES COLLEGE OF BUSINESS

Learn to climb the corporate ladder, found your own startup or take over the family business. The Soules College of Business gives you the knowledge and experiences to launch your career and advance the economy of East Texas.

Accounting BBA	Human Resource
Applied Arts and Sciences	Development BS
BAAS (online)	Industrial Technology BS
Computer Information	Information Technology BS
Systems BS	Management BBA
Computer Science BS	Marketing BBA
Finance BBA	
General Business BS	





# SCHOOL OF HEALTH PROFESSIONS

The School of Health Professions trains students to become driven, caring problem-solvers. Prepare for a career in public health, healthcare administration, rehabilitation, or exercise and movement science through hands-on instruction that holistically examines existing challenges and equips you to propose forward-looking solutions.

Applied Arts and Sciences BAAS (online)  
Communication Sciences & Disorders BS  
Health Sciences BS  
Kinesiology BS  
Wellness BS



# SCHOOL OF NURSING

From registered nurses on the front lines of healthcare delivery to clinicians and researchers contributing to nursing's scholarly output, the School of Nursing prepares graduates for careers as caring, community-oriented professionals serving East Texas and the nation.

Nursing  
BSN  
ADN/BSN Concurrent Track  
Associate Degree RN to  
BSN Track

# 95%

of our nursing students  
have a job at graduation  
or pursue graduate studies

# SCHOOL OF MEDICINE

As the first medical school in East Texas, the School of Medicine is transforming healthcare in our community. With a projected critical shortage of physicians serving East Texas, we train our students to step up to the challenge and make a real, positive impact on the needs of our region.

# BEN & MAYTEE FISCH COLLEGE OF PHARMACY

Our PharmD program is at the forefront of pharmacy education, teaching future pharmacists the solutions-oriented skills used day-to-day in the healthcare field — preparing them to become a valuable asset to any healthcare team and deliver compassionate and effective patient care.

## NOT SURE WHAT YOU WANT TO STUDY?

Our program finder can help you explore your interests and find the perfect program for you.

[uttyler.edu/programs](https://uttyler.edu/programs)



**INQUIRE AND LEARN MORE**  
[uttyler.edu/inquire-admguid-2025](https://uttyler.edu/inquire-admguid-2025)





# PURSUE YOUR FUTURE

**Fact:** you want a smooth admissions process. **Also fact:** our admissions team is here to guide you through every step of the process — making this experience as easy as possible. So whether you're a first-year student, a transfer, or transitioning from the military or workforce, we'll be here.

## THE DETAILS

### 1. Complete Your Application

Apply to UT Tyler on ApplyTexas or Common App. Our application opens on August 1. You'll need to pay a non-refundable \$60 application fee (\$75 for international applicants) to process your application. [applytexas.org](https://applytexas.org) | [commonapp.org](https://commonapp.org)

### 2. Send Your Transcripts

Send UT Tyler your official high school transcripts — electronically by your high school counselor to [processing@uttyler.edu](mailto:processing@uttyler.edu), via our One-Stop Service Center or mailed to Undergraduate Admissions.

### 3. Track Your Application

After you submit your application, check the email used in your application regularly for updates. Or, sign in to your admissions student portal to keep track of your application status and complete any To-Do list items.

## FRESHMAN REQUIREMENTS\*

Visit [uttyler.edu/apply](https://uttyler.edu/apply) for more information.

TOP 25%	AUTOMATICALLY ADMITTED
2ND-4TH QUARTILE	MINIMUM 2.75 GPA

\*SAT and/or ACT scores are recommended

## KEY DEADLINES

### August 1, 2025

ApplyTexas and Common App applications open for incoming first-year students

### December 1, 2025

Admission deadline to be eligible for scholarships

### May 1, 2026

Confirmation deadline for incoming freshmen

### October 1, 2025

The Free Application for Federal Student Aid (FAFSA®) becomes available for the upcoming academic year

### May 1, 2026

Deadline for Transfer Presidential Scholarship

### May 1, 2026

Admission deadline to be eligible for Patriot Promise

## ADMISSION CHECKLIST

1. Visit campus [uttyler.edu/visit](https://uttyler.edu/visit)
2. Apply at [commonapp.org](https://commonapp.org) | [applytexas.org](https://applytexas.org)
3. Submit official transcripts to [processing@uttyler.edu](mailto:processing@uttyler.edu)
4. Complete FAFSA (school code: 011163)
5. Check your admissions portal
6. Confirm your spot in the fall 2026 class and pay the confirmation fee
7. Select housing and roommates [uttyler.edu/housing](https://uttyler.edu/housing)
8. Send in final transcripts to [processing@uttyler.edu](mailto:processing@uttyler.edu)
9. Register for New Patriot Orientation [uttyler.edu/orientation](https://uttyler.edu/orientation)
10. Start your new journey at UT Tyler!

# TRANSFORM YOUR FUTURE

Transfer to UT Tyler to complete your studies and receive your bachelor's degree.



[uttyler.edu/transfer-application](https://uttyler.edu/transfer-application)

## THE DETAILS

### 1. Review Requirements

Review all requirements at [uttyler.edu/transfer](https://uttyler.edu/transfer)

### 2. Complete Your Application

Fill out a transfer or first-year application, and pay the nonrefundable \$60 fee (\$75 for international applicants).

### 3. Send Transcripts

Send official transcripts from all colleges and universities attended to date — or from your high school if you're transferring 30 or fewer credit hours — by email to [processing@uttyler.edu](mailto:processing@uttyler.edu), via our One-Stop Service Center or mailed to Undergraduate Admissions.

## TRANSFER REQUIREMENTS

CREDIT HOURS	30+ AT ACCREDITED INSTITUTION
GPA	2.0 ON A 4.0 SCALE
OFFICIAL TRANSCRIPTS	PROVIDED FROM ALL INSTITUTIONS ATTENDED





# SCHOLARSHIPS & FINANCIAL AID

**SCHOLARSHIP  
DEADLINES  
2026-2027  
DECEMBER 1**

See [uttyler.edu/scholarships](https://uttyler.edu/scholarships)  
for more details.

Did you know that more than 80% of our students receive financial aid? We grant millions of dollars in merit, talent and need-based scholarships to incoming first-year, transfer, international and graduate students. See what aid you might qualify for.



Visit [uttyler.edu/aid](https://uttyler.edu/aid) for full financial aid information.

SCHOLARSHIP	CRITERIA	AWARDED	ADMISSIONS DEADLINE
HONORS SCHOLARS SCHOLARSHIP*^	3.75 GPA and Completion of Scholarship Application. Select Students will be Invited for Interviews.	\$10,000 Per Year	December 1, 2025
PATRIOT SCHOLARSHIP*^	3.5 GPA	\$1,000 - \$5,000 Per Year	December 1, 2025
ACADEMIC EXCELLENCE SCHOLARSHIP*^	Top 25% of High School Class with 3.0 GPA or Minimum 3.5 GPA for Homeschool, Non-ranking and International Students	\$2,000 Per Year	December 1, 2025
TRANSFER PRESIDENTIAL SCHOLARSHIP^	30 College Credit Hours with a GPA of 3.0 or Higher	\$2,000	May 1, 2026

## PATRIOT PROMISE PROGRAM

PATRIOT PROMISE^	Family Income Under \$100,000 and Texas Resident. Submission of FAFSA Required.	Full Tuition & Fees See <a href="https://uttyler.edu/scholarships">uttyler.edu/scholarships</a> for more info.	May 1, 2026
------------------	---	--	-------------

\*Not required but an option: Academic Excellence: ACT: 24+/SAT: 1160; Patriot: ACT: 26+/SAT: 1240; Honors Scholars: ACT: 29+/SAT: 1350  
^ Funding is limited. Not all students reviewed will be selected.



## GRANTS

### FEDERAL PELL GRANTS

Pell Grants are available to undergraduates who have not earned their first bachelor's or professional degree.

Amount based on financial need from FAFSA, renewable each semester.

### TEXAS GRANTS

Available to undergraduates who reside in Texas. Amount based on financial need from FAFSA, renewable annually.

### WORK STUDY

Work-study programs provide undergraduate and graduate students with part-time employment in community service areas, reading and math tutoring programs, and university departments. Visit [uttyler.joinhandsbake.com](http://uttyler.joinhandsbake.com) to view available jobs.

## VETERANS

Our Military and Veterans Success Center provides individualized, relationship-centered support and advocacy to help veterans and dependents navigate from the military to a career. Visit [uttyler.edu/mvsc](http://uttyler.edu/mvsc) or call 903-565-5972 to learn more.



# HOW MUCH?

Attending college is an investment into your future. As one of the most affordable institutions in the UT System, UT Tyler is your gateway to a rewarding career and a fulfilling life.

Check out our net price calculator at [uttyler.edu/costcalculator](http://uttyler.edu/costcalculator) to easily see what your program might cost.





# HOUSING

From the quintessential college residential living experience to an off-campus alternative, find a UT Tyler housing community that fits your personality and lifestyle. Our five housing options range from double suites in a residence hall to four-bedroom apartments — all outfitted with high-speed WiFi, laundry, TV streaming and other amenities.

[uttyler.edu/housing](http://uttyler.edu/housing)





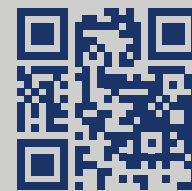
# COME SEE US

The best way to experience UT Tyler is to see it for yourself. Check out our classrooms, beautiful campus, close-knit community and vibrant student life.

**DAILY TOURS**  
**360 CAMPUS TOUR**  
**VIRTUAL SESSIONS**

**PATRIOT PREMIERE:**  
**- THE ULTIMATE CAMPUS EXPERIENCE**  
NOVEMBER 15 & APRIL 11

Go to [uttyler.edu/visit](https://uttyler.edu/visit)  
and schedule your visit!



Office of Admissions  
903.566.7203  
[admissions@uttyler.edu](mailto:admissions@uttyler.edu)  
[uttyler.edu](https://uttyler.edu)







**UTTyler**<sup>™</sup>  
THE UNIVERSITY OF TEXAS AT TYLER



**INQUIRE AND LEARN MORE**  
*[uttyler.edu/inquire-admguide-2025](https://uttyler.edu/inquire-admguide-2025)*