

OCTOBER 15, 2015



AIRWATCH

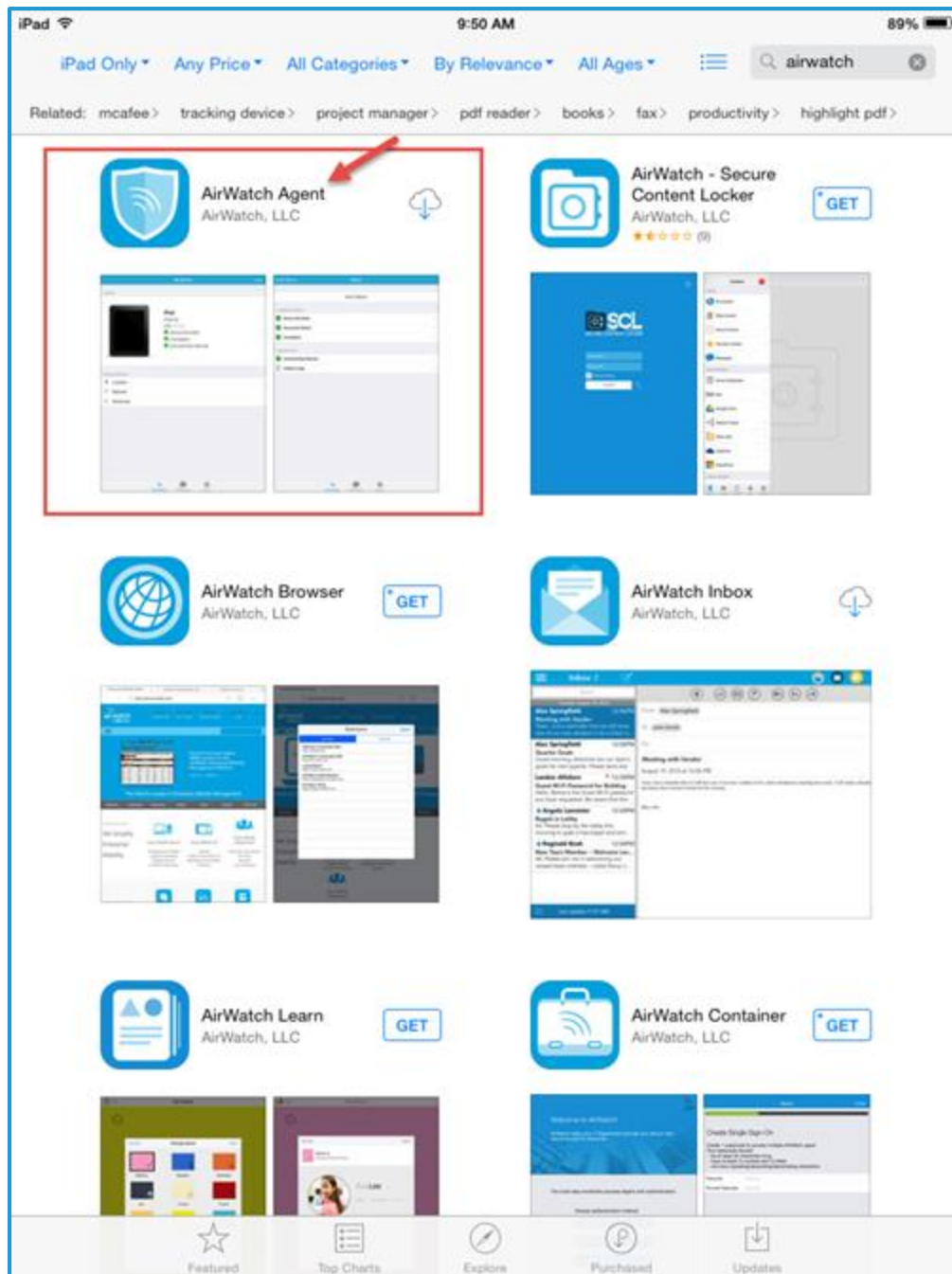
Installation and Step-by-Step Enrollment for iOS

INFORMATION TECHNOLOGY
THE UNIVERSITY OF TEXAS AT TYLER

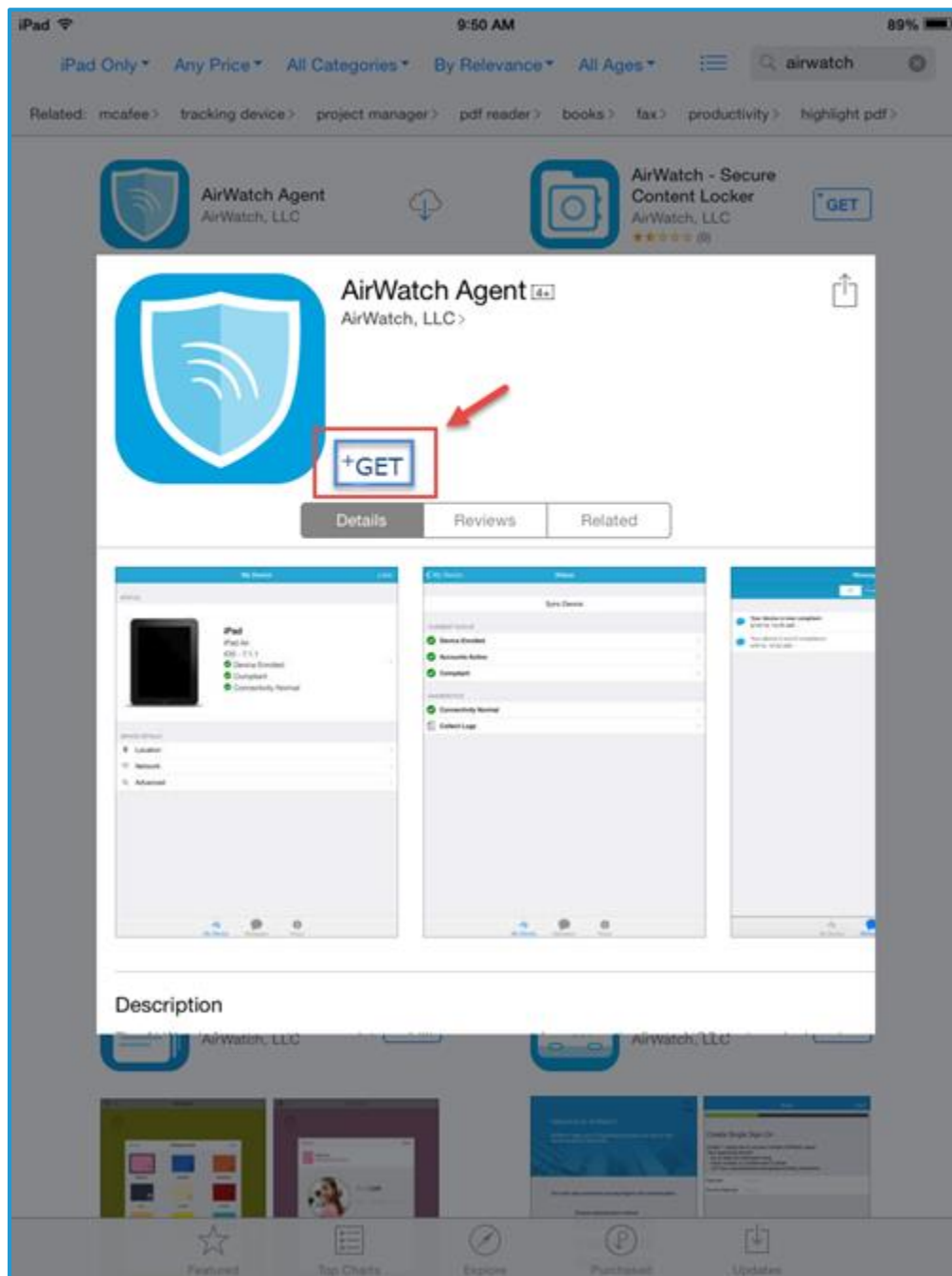
This guide covers the installation of the AirWatch Mobile Device Management Agent for all iDevices running iOS.

1. TAP ON THE APP STORE ICON

- a. Search for the app “Air Watch”
 - i. You will see the “AirWatch Agent”

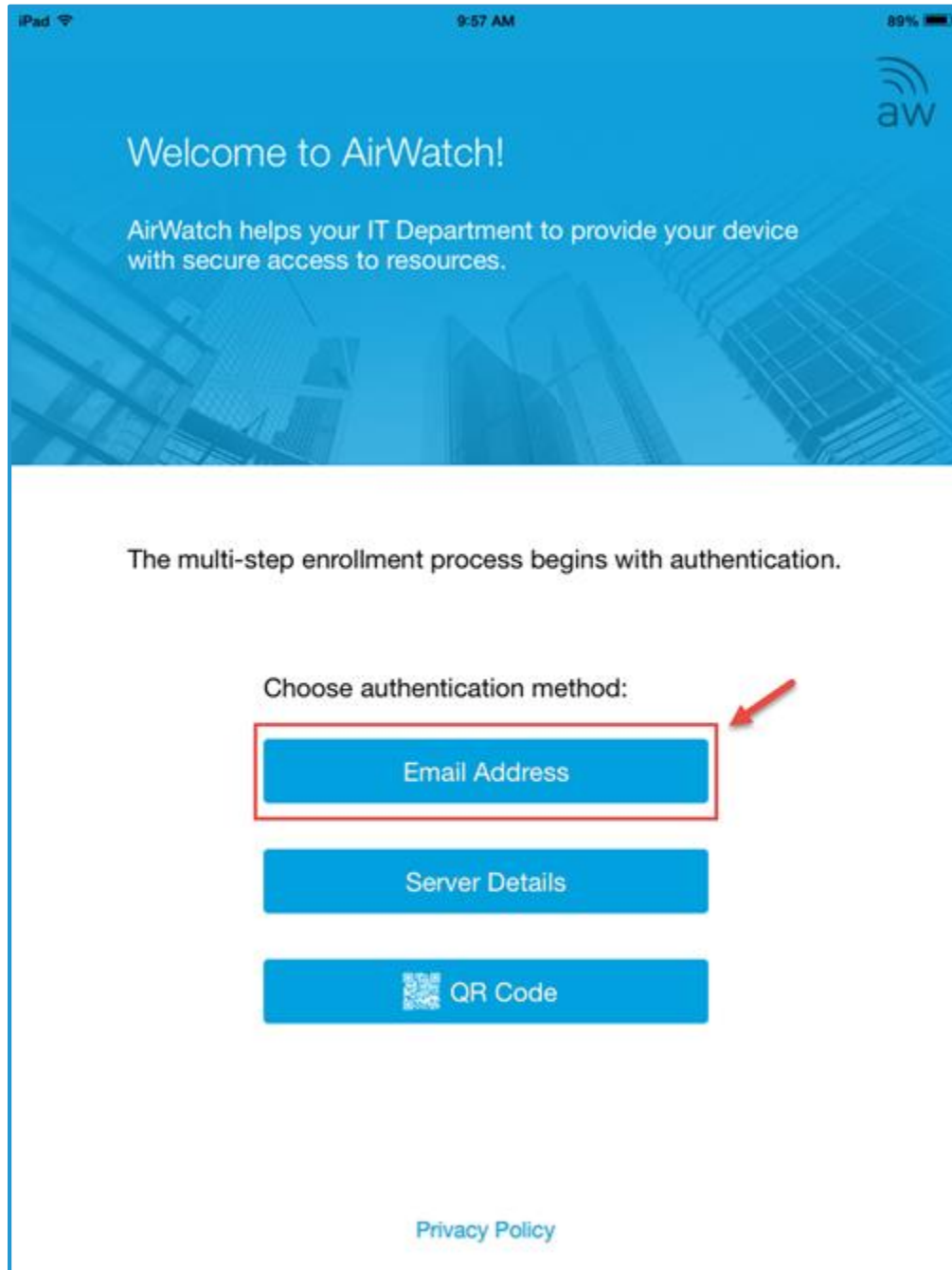


- ii. Tap the “AirWatch Agent”
- iii. Tap **Get** to begin the installation of “AirWatch Agent”

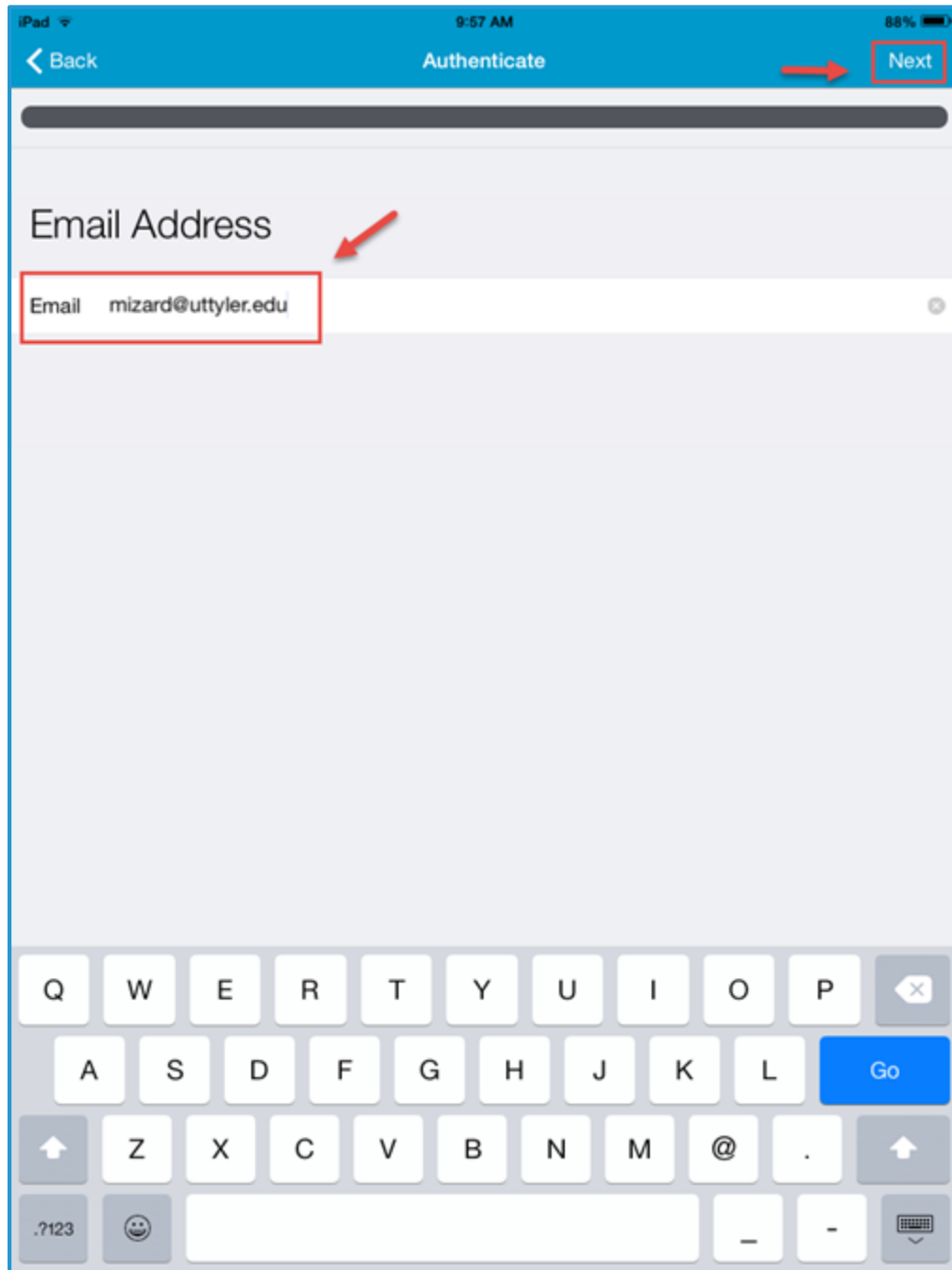


2. AFTER THE INSTALLATION, OPEN AIRWATCH AGENT AND FOLLOW THESE STEPS:

- a. You will be asked to choose an authentication method. Choose **Email Address**.



- b. Type your email address and tap **Next**.



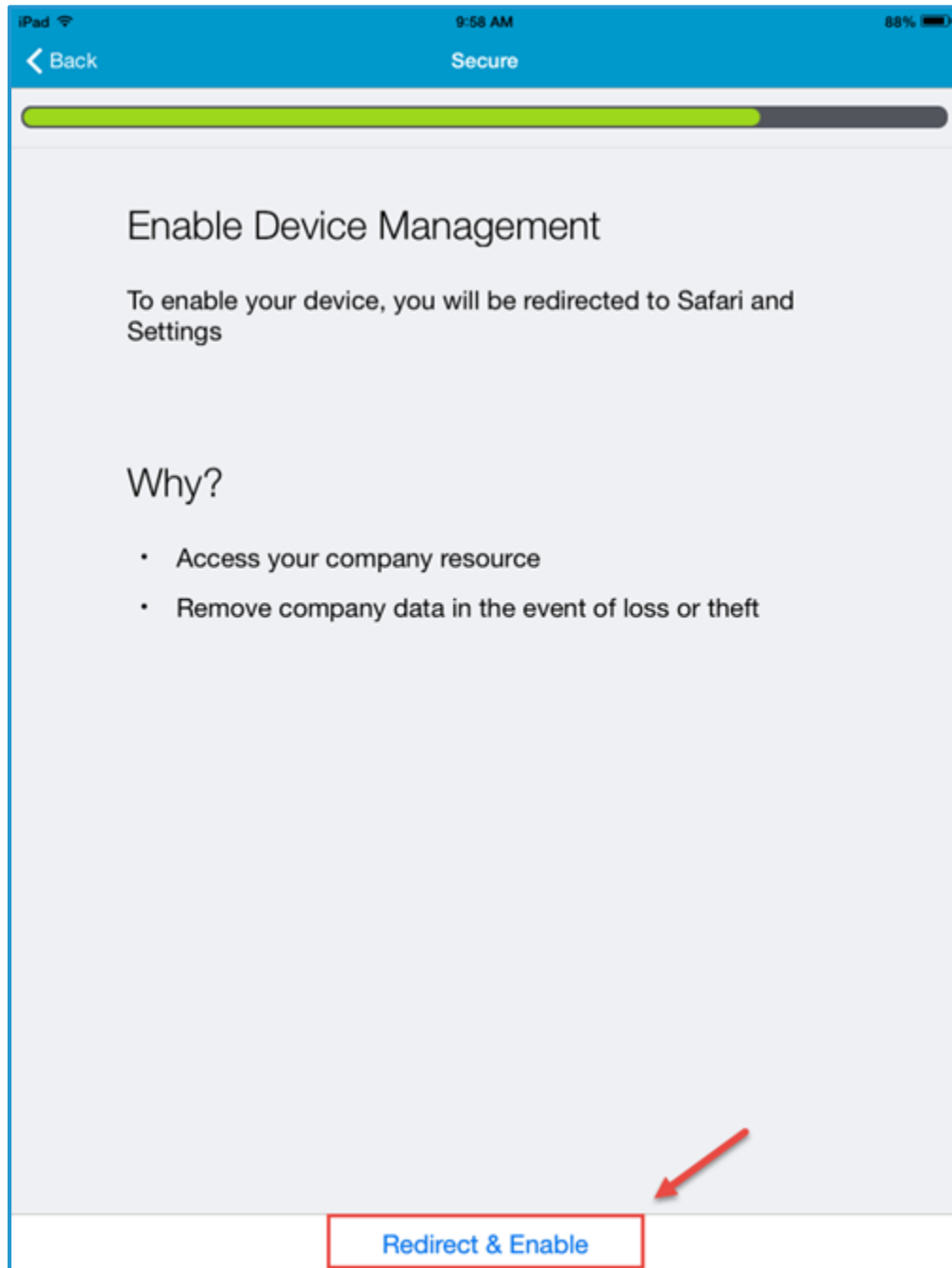
- c. You will be prompted for your credentials. Enter your UT Tyler credentials and tap **Next**.

The screenshot shows an iPad screen with a blue header bar. The status bar at the top indicates 'iPad', signal strength, '9:58 AM', and '88%' battery. The header bar contains a '< Back' button, the title 'Authenticate', and a 'Next' button. A red arrow points to the 'Next' button. Below the header is a progress bar. The main content area is titled 'User Credentials'. Below this title are two input fields: 'Username' with the text 'mizard' and 'Password' with masked characters (dots). A red box highlights these two fields, and a red arrow points to the 'Next' button.

- d. You should now be on the **Device Ownership** page.
- Select "Corporate – Dedicated" **IF you do not share** this device with other people in your department.
OR
 - Select "Corporate – Shared" **IF this is a shared device** for a department.
 - IMPORTANT:** Input the Asset Tag for your device and tap **Next**.

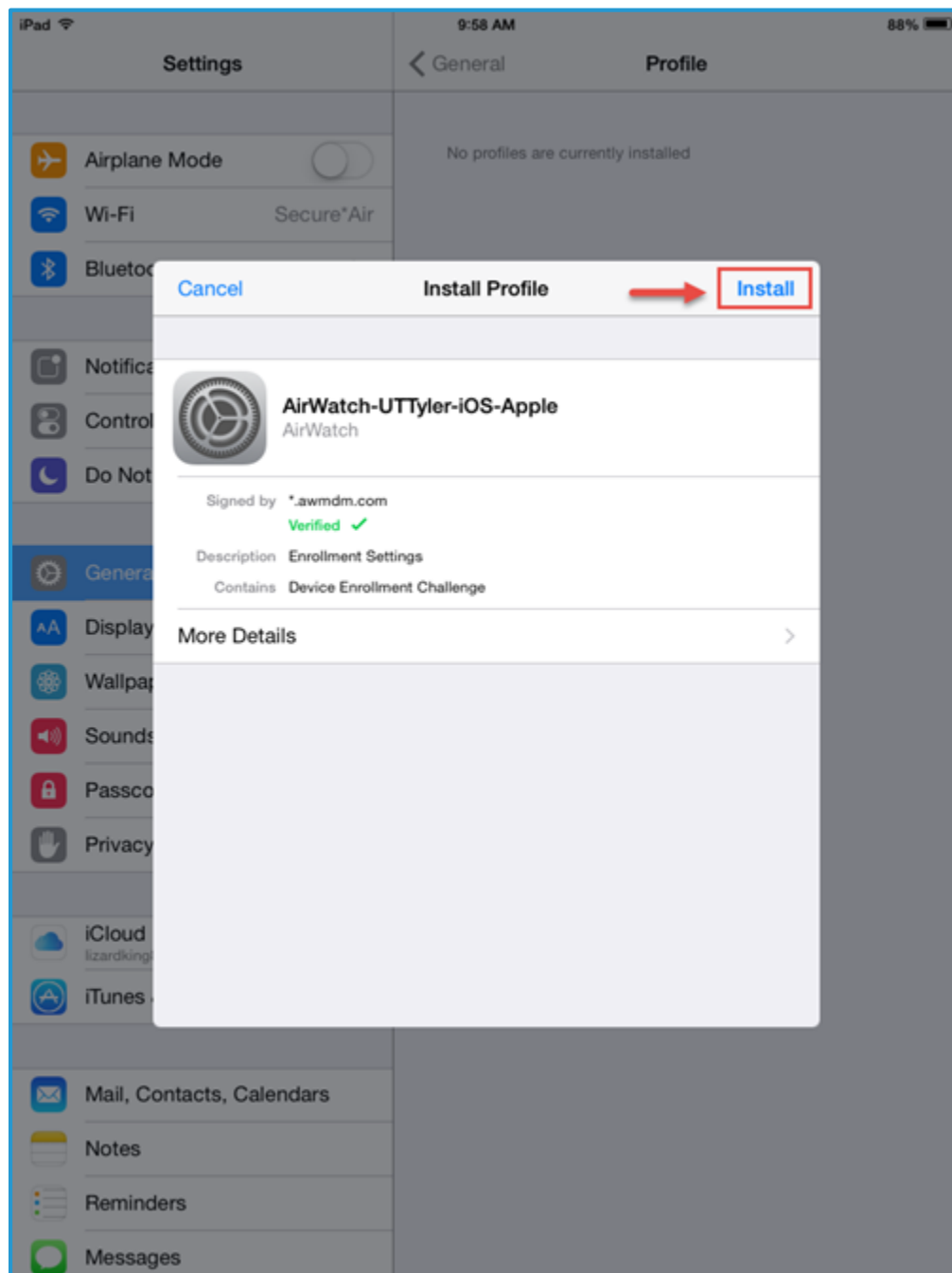
The screenshot shows the 'Device Ownership' screen on an iPad. At the top, there is a blue header bar with a back arrow, the word 'Authenticate', and a 'Next' button. Below the header is a green progress bar. The main content area has a title 'Device Ownership' and three radio button options: 'Corporate - Dedicated' (which is selected and has a blue checkmark), 'Corporate - Shared', and 'Employee Owned'. Below these options is a text input field labeled 'Asset Number' with the word 'Optional' in grey text next to it. Red arrows from the instructions point to the 'Corporate - Dedicated' option and the 'Asset Number' field.

- e. On the **Secure** screen, tap **Redirect & Enable** to install the AirWatch MDM profile.

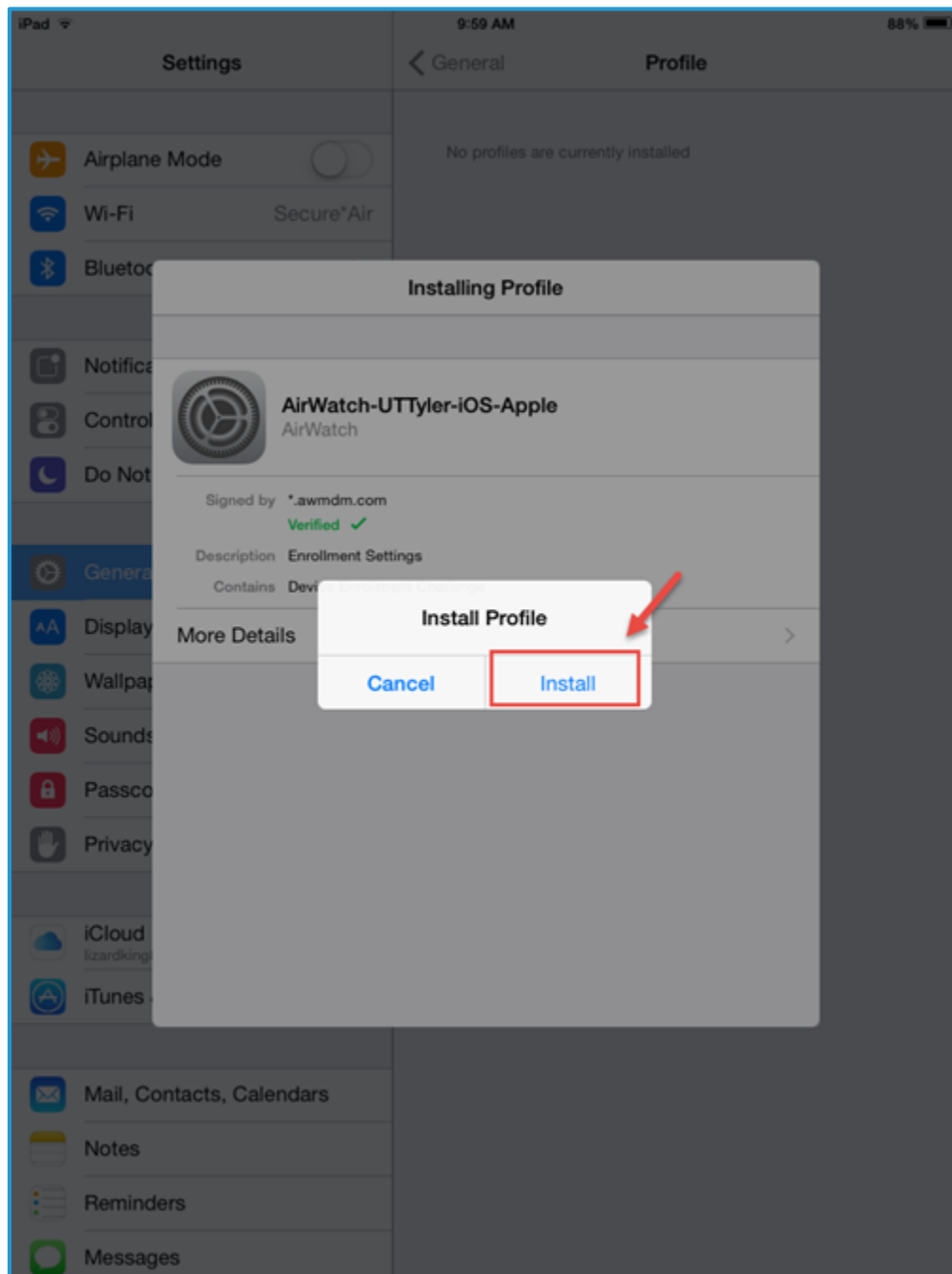


3. INSTALL THE AIRWATCH MDM PROFILE

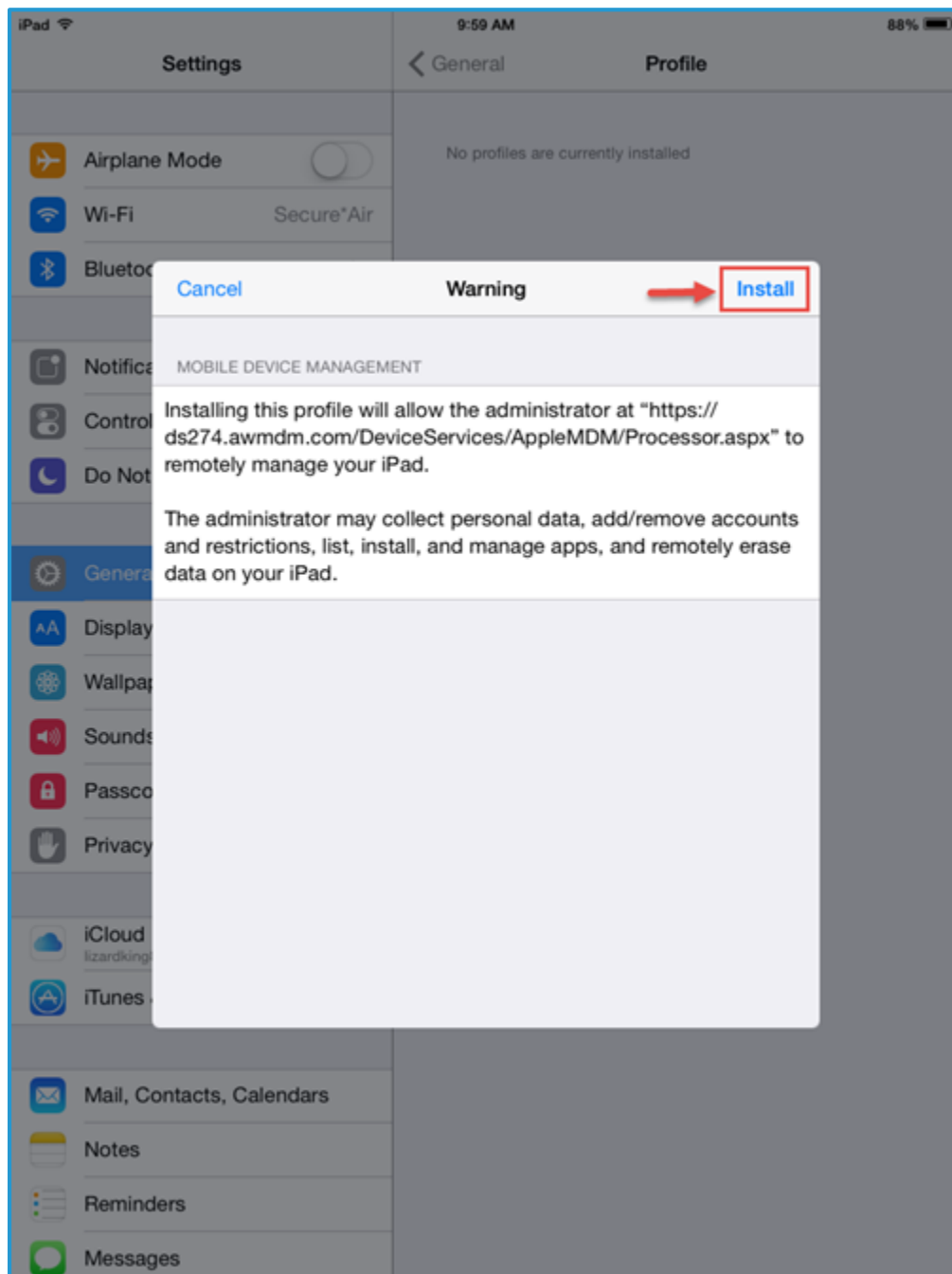
- a. Tap **Install** to begin the profile installation process.



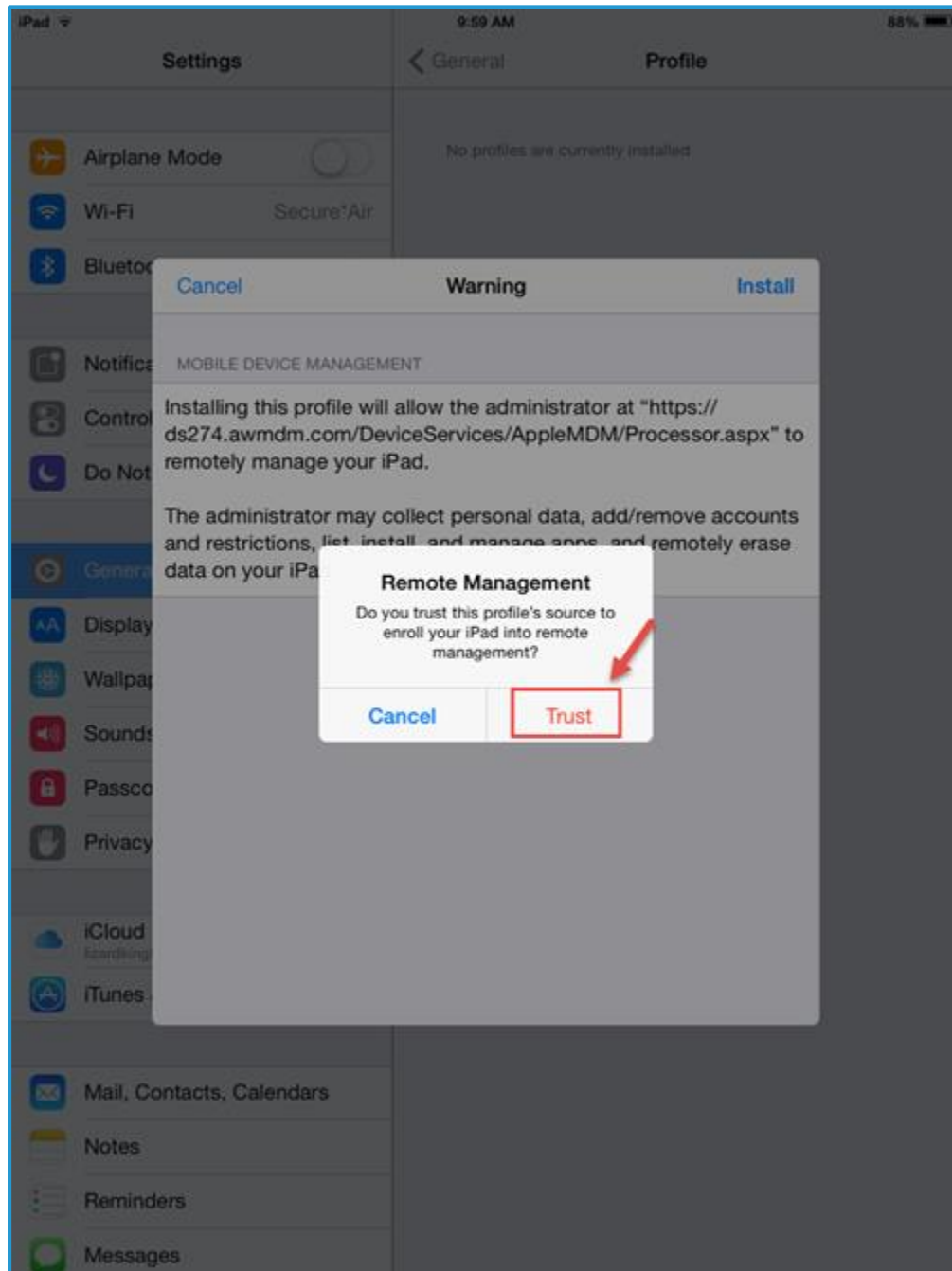
- b. Tap **Install** again.



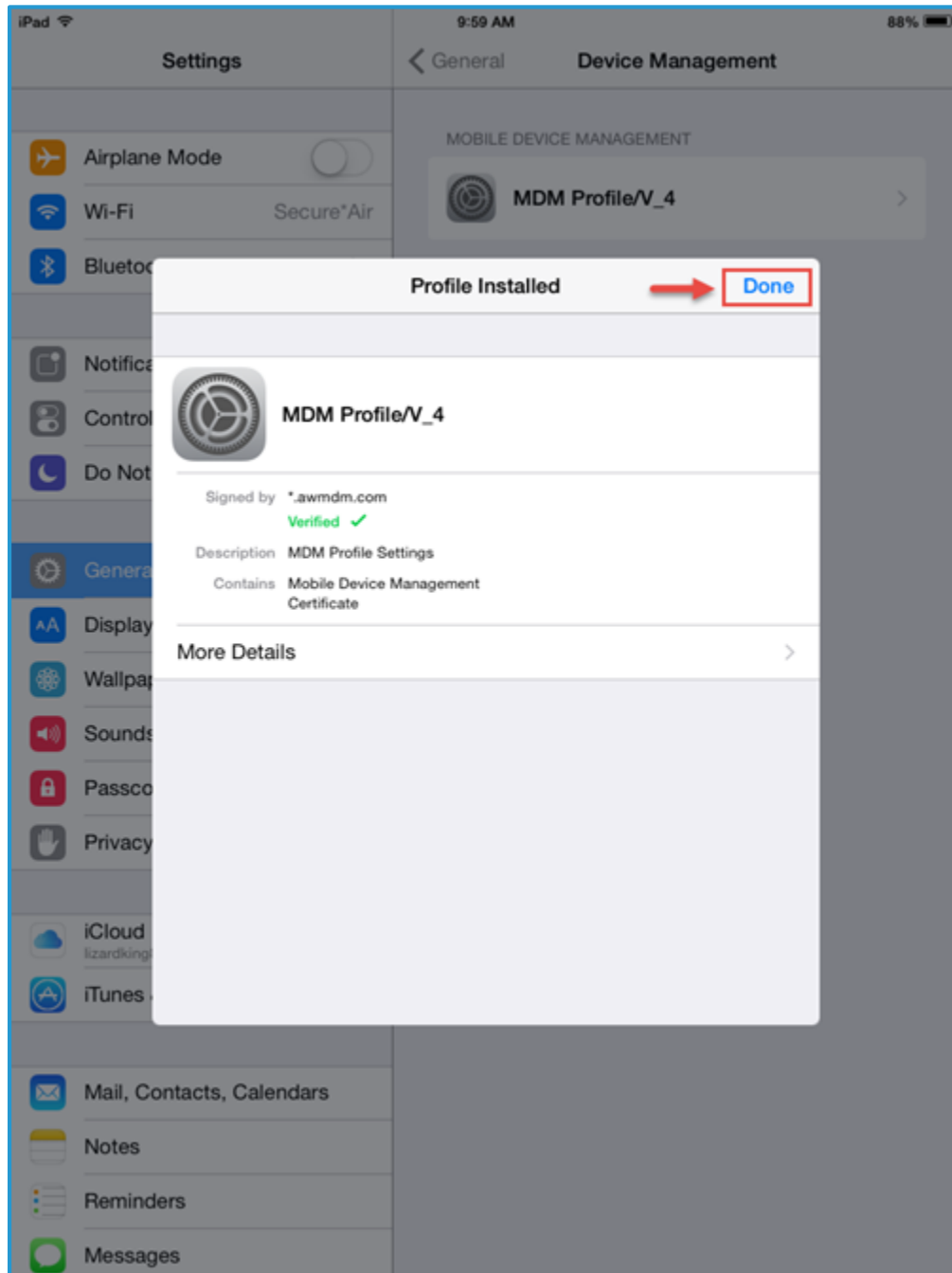
- c. Read the profile installation warning, and proceed with the installation by tapping **Install** once more.



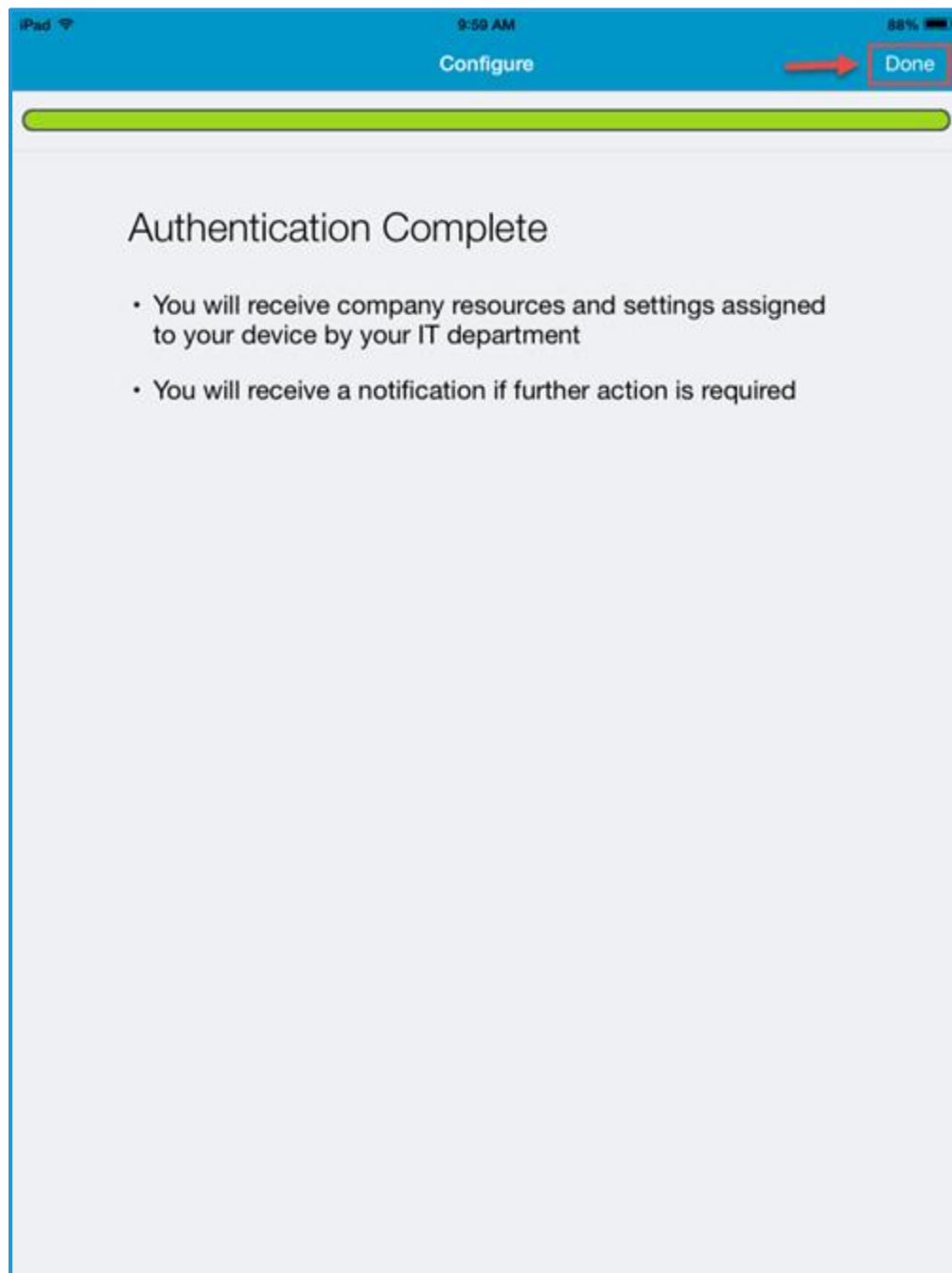
- d. When prompted, tap **Trust** and the profile install will complete.



- e. You should now see a page that tells you the profile is installed. Tap **Done** to continue.



- f. Congratulations – you are finished. Tap **Done** to finish.



4. OPEN AIRWATCH AGENT APP

- a. A successfully enrolled agent will look like this.

